

**NOTICE OF CONSULTATION
JUDGESHIP REPORT**
East Central Judicial District
Judgeship No. 2 with Chambers in Fargo, ND
(Term Expires December 31, 2022)

FILED
IN THE OFFICE OF THE
CLERK OF SUPREME COURT
SEPTEMBER 20, 2018
STATE OF NORTH DAKOTA

The following report regarding criteria concerning disposition of the vacancy in Judgeship No. 2 is submitted pursuant to North Dakota Supreme Court Administrative Rule 7.2, Section 4.

1. **Population**

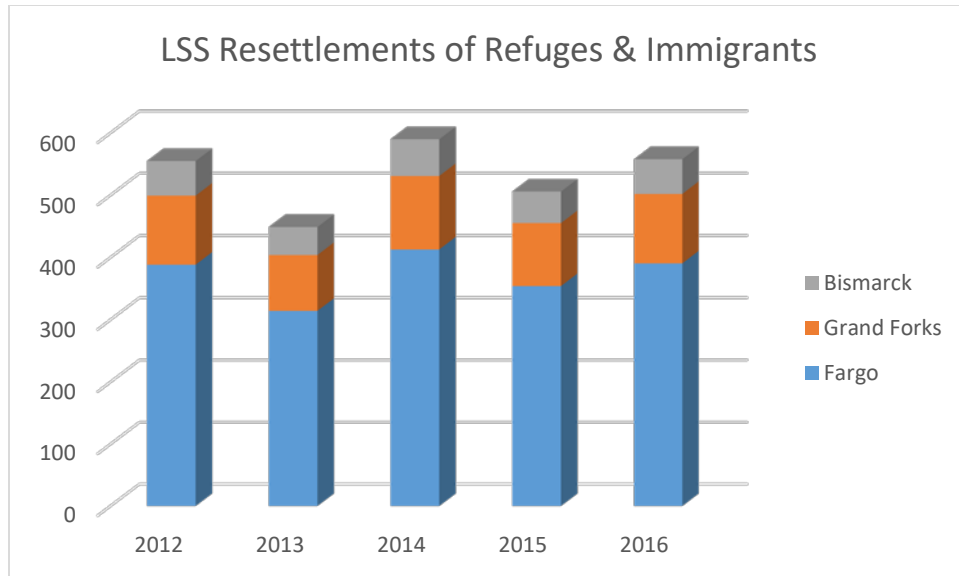
The East Central Judicial District is comprised of Cass, Steele and Traill Counties. The population figures from the 2010 US census and estimates for 2017 are set forth in the table below¹:

County	Year	
	2010	2017
Cass	149,778	177,787
Steele	1,950	1,917
Traill	8,121	8,013
District Total	159,849	187,717

According to information provided by Lutheran Social Services, in the latest 5 years of available data (ending in early 2015) they have helped an average of 530 refugees per year resettle in North Dakota. Of these, approximately 70 percent are settled in the Fargo/West Fargo area.²

¹ Annual Estimates of the Resident Population: April 1, 2010 to July 1, 2017 Source: U.S. Census Bureau, Population Division <https://factfinder.census.gov/faces/tableservices/jsf/pages/productview.xhtml?src=bkmk> reached via <https://www.commerce.nd.gov/census/Population/>

² [Testimony of Jessica Thomasson, CEO, Lutheran Social Services to House Government & Veterans Affairs Committee; February 3, 2017. Pgs 4 and 5.](#)



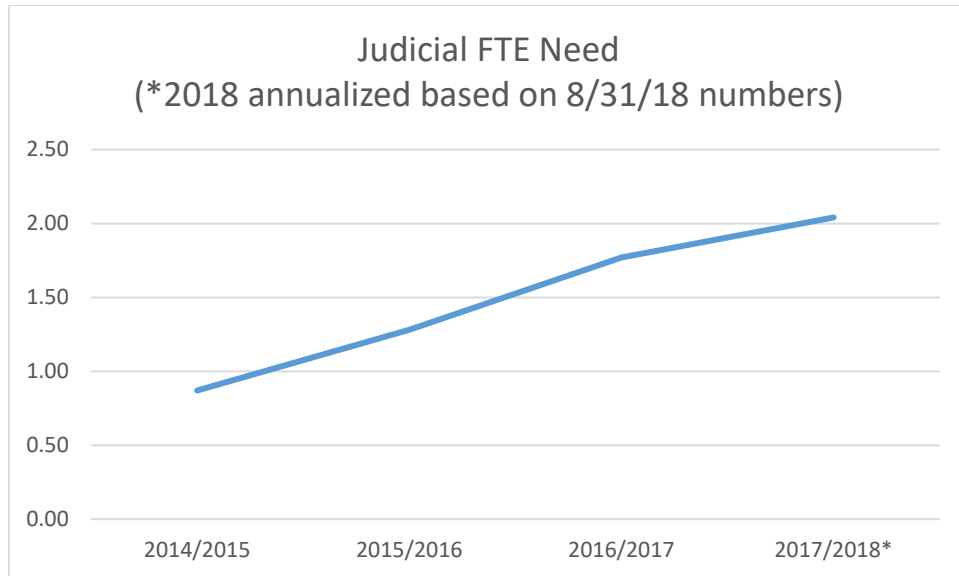
In her testimony before the Human Services Committee on August 2, 2017 Ms. Shirley Dykshoorn, Interim State Refugee Coordinator for ND, said during the first 10 months of federal fiscal year 2017, there were 370 refugees resettled in North Dakota. She said 296 of the refugees were placed in the Fargo area, 46 in Grand Forks, and 28 in Bismarck. She said the refugees were from Afghanistan, Bhutan, Democratic Republic of Congo, Eritrea, Ethiopia, Iraq, Somalia, and Sudan.³

2. Caseloads and Unusual Case Types

State Court Administration data and the annualized 2018 weighted caseload study shows the East Central Judicial District has a need for 13.16 judicial FTE's. Currently there are 11 judicial FTE's resulting in a shortage of 2.16 judicial FTE's.

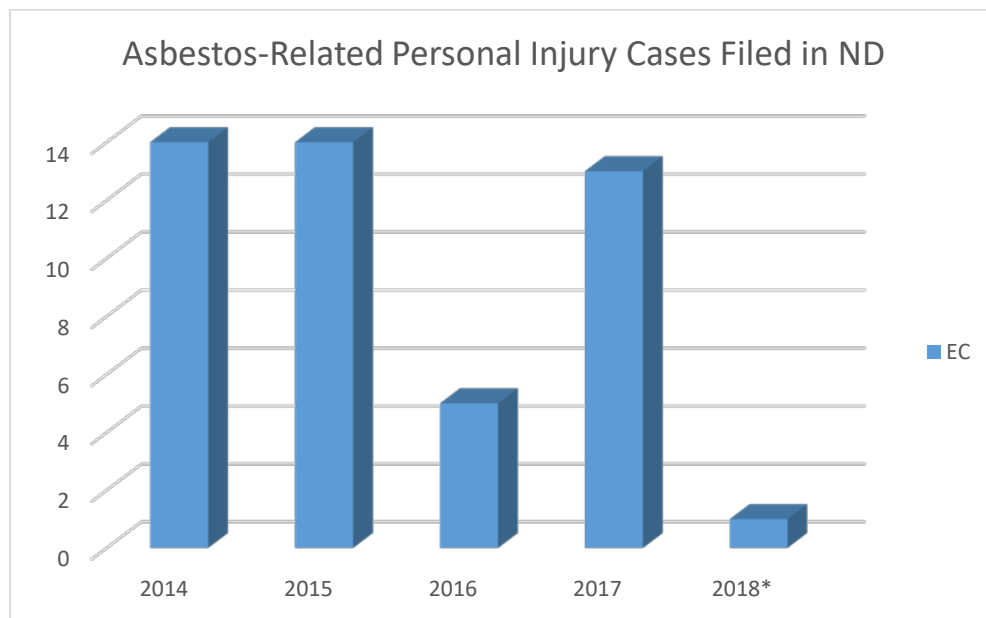
The average need for FTE's in the East Central Judicial District in 2014/2015 was .87, in 2015/2016 was 1.28, in 2016/2017 was 1.77 and 2017/2018 (annualized estimate for 2018) was 2.04. As shown in the chart below, the need for judicial officers has steadily increased.

³ <http://www.legis.nd.gov/assembly/65-2017/interim/19-5028-03000-meeting-minutes.pdf>; page 11



Source: [Weighted Caseload Reports](#)

Cass County is home to corporate offices and has several large law firms in the area. This leads to the filing of more complex civil litigation cases in the district. All asbestos-related personal injury cases filed in the state of North Dakota in the last five years have been filed in Cass County which consumes a large deal of judge time.



Source: [Case Index Report](#)

*2018 figures are as of 8/31/2018

Cass County also has participants in one juvenile and two adult drug courts.

Judgeship No. 2 is chambered in Fargo and is currently responsible for a share of the caseload in Cass, Steele, and Traill Counties.

3. Trends in Population and Caseloads

As seen from the chart under criteria 1 from above, the population of the district is increasing. While the population of Traill and Steele counties has remained fairly constant, Cass County is showing an estimated 18.7% increase.

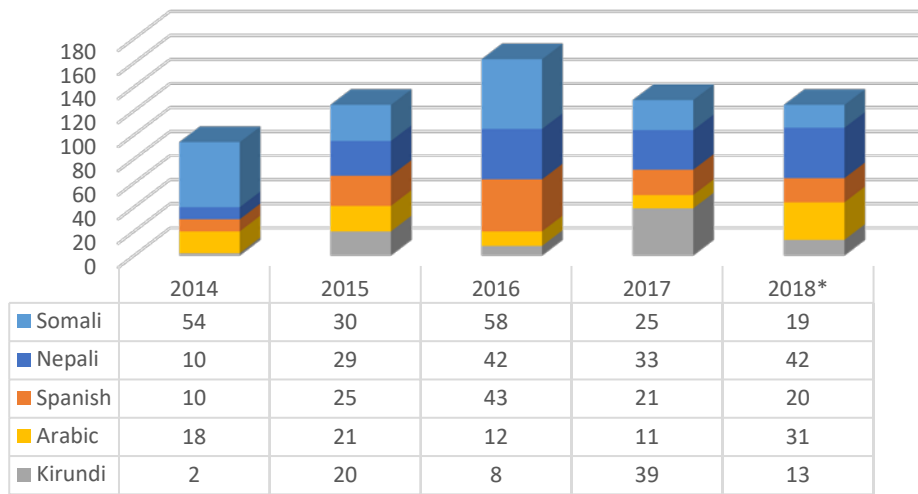
As previously discussed, Cass County is home to refugees from many countries and other non-English speaking people. This requires that the court use interpreters in many of its hearings which necessitates more time be given to the proceedings. Statistics show that over the last five years interpreters were needed for 28 different languages.

Interpreters Used			
Acholi	1	Krahn	3
Albanian	3	Liberian	19
Amharic	12	Madi	2
Arabic	93	Mandarin	18
Bosnian	41	Nepali	156
Cambodian	1	Russian	6
Chinese	9	Somali	186
Creole	11	Spanish	119
Dinka	2	Sudanese	6
Farsi	2	Swahili	48
French	14	Tigrinya	1
Hakha Chin	5	Ukrainian	1
Kinyarwanda	4	Vietnamese	20
Kirundi	82	TOTAL	865

Source: [Interpreter Statistics Report](#)

The following chart outlines data for the five languages showing the highest need for interpreters over a five-year span.

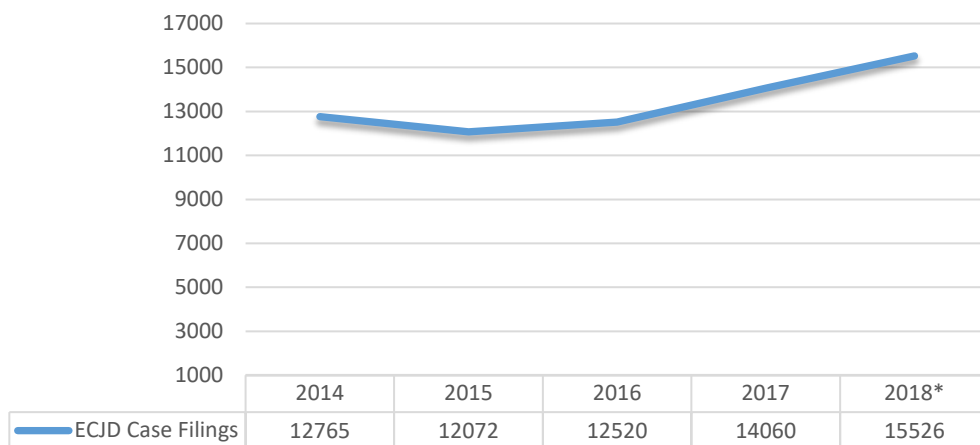
Highest Five Interpreted Languages *2018 as of 8/31



Source: [Interpreter Statistics Report](#)

As seen in the following charts, State Court Administration data also shows that overall filings in the district have increased during the last several years. Some trends are apparent when examining specific case types. Analysis shows misdemeanors and infractions, as well as the more complex felony cases, are increasing. The filings within the five categories of the weighted caseload with the highest case weights are depicted below and are shown to be trending upward.

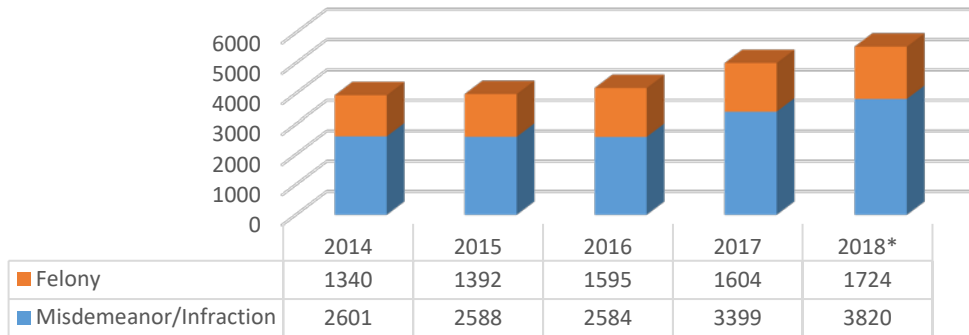
ECJD Case Filings w/o Traffic and Game & Fish *2018 is annualized based on 8/31 numbers



Source: [Case Filing Statistics Reports](#)

Felony & Misdemeanor/Infraction Filings

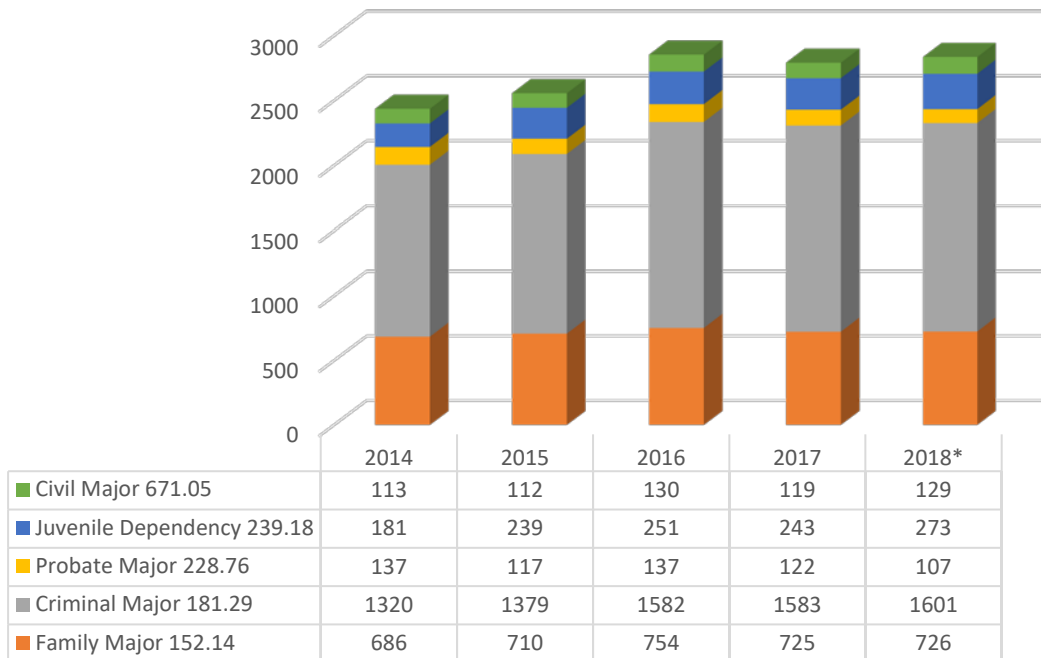
*2018 is annualized based on 8/31 numbers



Source: [Case Filing Statistics Reports](#)

ECJD - Highest Five Case Weight Filings

*2018 is annualized based on 8/31 numbers



Source: [Weighted Caseload Reports](#)

4. Impact on Travel Requirement

The East Central Judicial District consists of Cass, Steele and Traill Counties. All East Central judges are assigned cases through the district.

5. Age or Possible Retirement of Remaining Judges

There are no immediate plans for retirement of any of the other judges in the East Central Judicial District.

Judge Olson has reached retirement age. The next judge to reach retirement age is Judge Marquart, who will turn 65 in 2019.

Judgeship #	Name	Birth Year	Year Turn 65	Re-election Year
1	Susan L. Bailey	1963	2028	2020
2	VACANT			
3	Steven E. McCullough	1962	2027	2022
4	Steven L. Marquart	1954	2019	2022
5	Frank L. Racek	1957	2022	2020
6	Thomas R. Olson	1952	2017	2022
7	Wade L. Webb	1970	2035	2020
8	John C. Irby	1956	2021	2018
9	Stephannie N. Stiel	1978	2043	2019

Source: North Dakota Supreme Court at <http://www.ndcourts.gov/court/DISTRICTS/EC.htm>

6. Availability of Facilities

A. Court Facilities

Each county in the district maintains court facilities with security in the courtrooms when requested. Cass County has full-time security at the entrance to the courthouse. They are also able to utilize three courtrooms with access to additional security and segregated travel paths for in-custody appearances. Traill and Steele Counties provide law enforcement screening outside the courtroom on days when court is scheduled. All counties in the district have upgraded their facilities as part of the Court Facilities Improvement Fund.

B. Correctional Facilities

Each of the counties listed below have cities with a correctional facility. Grade one means a correctional facility for confining inmates not more than one year. Grade two means a correctional facility for confining inmates not more than ninety days.⁴

County	Facility	Classification
Cass	Cass County Jail	Grade 1
Traill	Traill County Jail	Grade 2

Source: personal contact with jail staff

C. Law Enforcement

Each chambered city has adequate law enforcement officials.

8. Conclusion

Elimination of Judgeship No. 2 would have a profound impact on the district. The workload in the district is stable and weighted caseload statistics from the State Court Administrator's office show that the district is consistently short judicial FTE's with the 2018 report showing a shortage of 2.16 FTE's.

Maintaining Judgeship No. 2 is necessary to provide adequate judicial services to the people of the East Central Judicial District. Eliminating the judgeship would require the remaining 8 judges in the East Central Judicial District to assume an increased caseload and increased travel time in the district. Not only would this hinder services in the local counties, it would also reduce the dispositional rate of cases.



Rodney Olson
Trial Court Administrator
State of North Dakota – Administrative Unit Two

List of Attachments

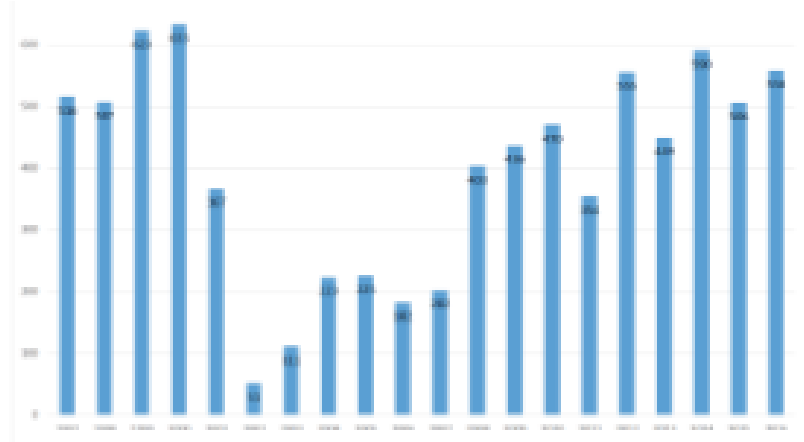
⁴ NDCC § 12-44.1-06 Jails and Regional Correctional Centers

1. [Testimony of Jessica Thomasson, CEO, Lutheran Social Services to House Government & Veterans Affairs Committee; February 3, 2017. Pages 4 & 5.](#)
2. [Testimony of Shirley Dykshoorn, Interim State Refugee Coordinator for ND to Human Services Committee; August 2, 2017. Page 11.](#)
3. [Weighted Caseload Reports](#)
 - a. [2018 Annual Report](#)
 - b. [2017 Annual Report](#)
 - c. [2016 Annual Report](#)
 - d. [2015 Annual Report](#)
 - e. [2014 Annual Report](#)
 - f. [2017/2018 Averages Report](#)
 - g. [2016/2017 Averages Report](#)
 - h. [2015/2016 Averages Report](#)
 - i. [2014/2015 Averages Report](#)
4. [Case Index Report – Asbestos filings in ND 2014 to present](#)
5. [Interpreter Statistics Report – 2013 through August 2018](#)
6. [Case Filing Statistics](#)
 - a. [2018 \(Using Projected Totals\)](#)
 - b. [2017 \(also showing 2016\)](#)
 - c. [2015 \(also showing 2014\)](#)

ATTACHMENT 1-Testimony of Jennifer Thomasson

Testimony for Housing Government & Veterans Affairs Committee | 2-3-17
Page 4 of 20

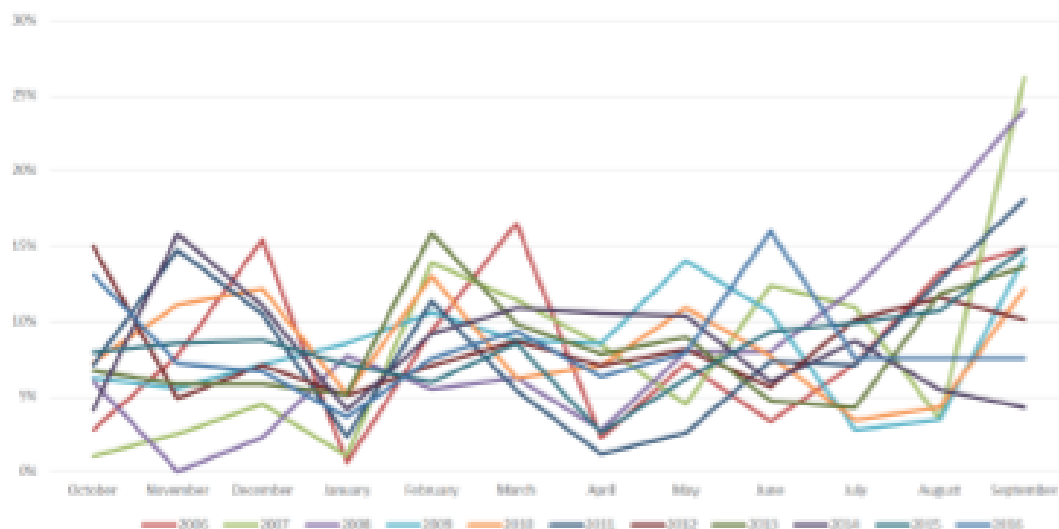
Over the last 20 years, LSSND has helped to resettle an average of 400 people in North Dakota each year. In the last five years, the average has been closer to 500 people per year. Last



federal fiscal year LSSND helped to resettle 558 people in 236 families originating from 11 home countries. 38 percent of the individuals were children. 85 percent were re-uniting with family who is already living in the state.

There are three U.S. State Department-approved resettlement sites in North Dakota: Fargo/West Fargo, Grand Forks, and Bismarck. Over the last several years, we have seen approximately 70

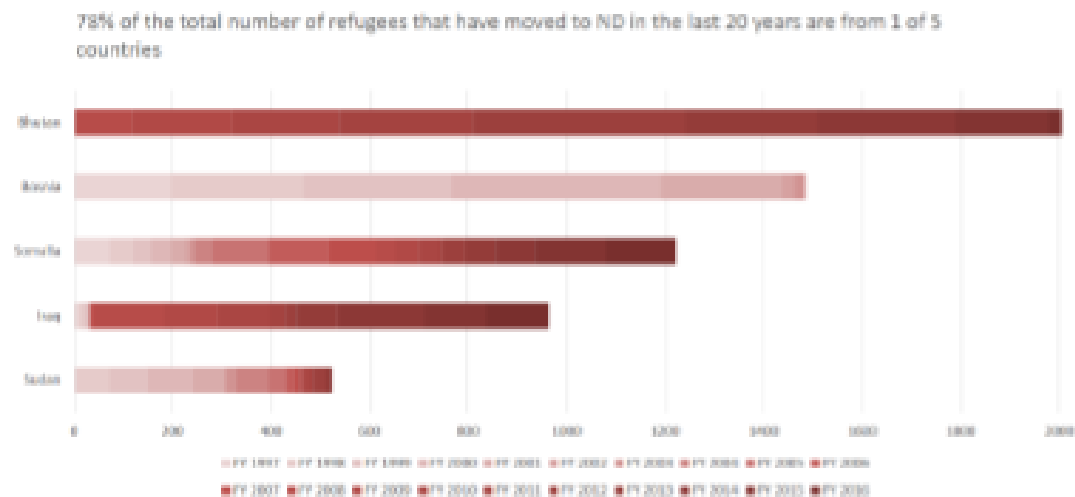
LSS typically receives 3-12% of the total number of annual resettlements each month
Historically January has the lowest number of resettlements, whereas November, February and September tend to see higher numbers



percent of the resettlement in the state occurring in Fargo/West Fargo, about 20 percent in Grand Forks, and about 10 percent in Bismarck.

The preceding chart shows patterns of resettlement throughout the year. It is a common misperception that resettlement happens in large numbers once or twice each year, when in fact new arrivals come to North Dakota throughout the year. This distribution across time, while uneven, does have the benefit of spreading out the community impact of resettlement.

Also of interest to many is where refugees come from. 78 percent of the total number of refugees that have moved to North Dakota in the last 20 years have been from one of five countries. The following chart shows the time-specific patterns of resettlement. Exhibit A provides a more detailed data breakdown of refugees resettled by country, by year since 1997.



ATTACHMENT 2 – Testimony of Shirley Dykshoorn

19.5028.03000

Human Services Committee

Ms. Dykshoorn said during the first 10 months of federal fiscal year 2017, there were 370 refugees resettled in North Dakota. She said 296 of the refugees were placed in the Fargo area, 46 in Grand Forks, and 28 in Bismarck. She said the refugees were from Afghanistan, Bhutan, Democratic Republic of Congo, Eritrea, Ethiopia, Iraq, Somalia, and Sudan.

In response to a question from Representative Johnston, Ms. Dykshoorn said schools are notified in advance that refugees may be placed in the school district. She said the advance notice allows schools to ensure adequate English language learner programs are available.

In response to a question from Senator Clemens, Ms. Dykshoorn said the State Department determines the cities where refugees will be resettled. She said cities are chosen based on available housing and other services that may be utilized by refugees.

Senator Holmberg said some communities may not have the appropriate level of services or infrastructure available to adequately serve refugee resettlement. He questioned how it is determined which communities have adequate services for resettlement.

Ms. Dykshoorn said many refugees are resettled in Fargo due to the availability of public services such as transportation. She said refugees are resettled in other cities, such as Grand Forks, because of employment opportunities. However, she said, the primary determinant for the placement of a refugee is if the refugee already has family in a community. She said most refugees resettled in North Dakota already have family living in the state.

In response to a question from Representative P. Anderson, Ms. Dykshoorn said many refugees remain in the community where they were originally placed. However, she said, refugees may move after being resettled due to employment opportunities or other reasons.

In response to a question from Senator Hogue, Ms. Dykshoorn said the state does not have the ability to direct where refugees will be resettled. She said the federal government determines the placement of refugees.

In response to a question from Representative Schneider, Ms. Dykshoorn said refugees have a significant impact on filling workforce needs. She said employers have contacted Lutheran Social Services to obtain information regarding refugees that are seeking employment.

In response to a question from Senator Mathern, Ms. Dykshoorn said there is no prohibition on refugees moving from their original resettlement city.

Senator Mathern said there may be opportunities for cities to create programs to encourage refugees to move to their area to fill workforce needs.

Senator Lee said many immigrants will settle in places with similar cultures or where immigrants from the same country previously settled. She said schools in the Fargo area are doing an excellent job with English language learner programs.

In response to a question from Representative Schneider, Ms. Dykshoorn said data is not widely available regarding the workforce and economic impact of refugees.

In response to a question from Representative Trottier, Ms. Dykshoorn said she will provide information to the committee regarding the average cost to resettle a refugee.

In response to a question from Representative Trottier, Ms. Dykshoorn said local schools are responsible for providing interpreter and English language learner services. However, she said, funding is provided to school districts to help offset the costs of the services.

In response to a question from Representative Trottier, Ms. Dykshoorn said the employment rate of employable adult refugees is approximately 70 to 80 percent.

In response to a question from Representative P. Anderson, Ms. Dykshoorn said Lutheran Social Services generally provides services and support to refugees for 3 to 5 years.

ATTACHMENT 3A – Weighted Case Load Report (2018)

JUDICIAL OFFICER WEIGHTED CASELOAD STUDY
BASED ON 2018 CASE FILINGS THROUGH AUGUST 2018 - ANNUALIZED
Based on Total Judicial Officers as of August 31, 2018

Case Type	Case Weight	Unit 1		Unit 2		Unit 3		Unit 4		ALL
		NE	NEC	SE	EC	SC	SW	NW	NC	
Criminal Major	181.29	473	635	575	1,601	1,946	294	779	827	7,127
Criminal Minor	26.48	2,669	2,141	2,148	3,968	4,361	1,425	3,351	2,103	22,164
Criminal Summary	0.37	9,714	8,171	12,582	13,607	16,886	8,192	12,665	12,501	94,316
Civil Major	671.05	44	63	63	129	108	62	86	51	605
Civil Minor	54.86	906	1,257	1,304	2,255	1,905	596	927	938	10,086
Civil Summary	6.65	1,155	1,617	1,533	2,780	2,955	1,104	1,877	1,847	14,867
Family Major	152.14	221	326	315	726	621	210	276	395	3,089
Family Minor	53.63	368	330	299	438	630	131	236	347	2,777
Family Summary	46.44	41	30	44	123	75	38	29	30	408
Probate Major	228.76	66	56	101	107	77	35	65	65	569
Probate Minor	32.02	168	137	402	428	261	102	188	204	1,889
Probate Summary	9.93	404	179	350	329	449	309	762	351	3,131
Juvenile Delinquency	106.60	72	138	96	320	162	32	44	45	908
Juvenile Dependency	239.18	113	207	132	273	287	89	164	206	1,469
Juvenile - Other	30.00	18	45	33	41	126	14	24	39	339
Total Filings		16,428	15,329	19,974	27,120	30,846	12,629	21,468	19,946	163,739
Weighted Filings		361,234	449,743	437,747	910,518	922,680	255,191	483,996	467,969	4,289,079
Presiding Judge time at 47.14 min/day		9,664	9,664	9,664	9,664	9,664	9,664	9,664	9,664	77,310
Total workload		370,898	459,407	447,411	920,182	932,344	264,855	493,660	477,633	4,366,389
Judge Year (Minutes) 205 Days		86,100	86,100	86,100	86,100	86,100	86,100	86,100	86,100	
Avg. Non-Case time for all judicial FTEs 54.29 min/day		11,130	11,130	11,130	11,130	11,130	11,130	11,130	11,130	
Adjusted Judge Year (judge year less non case time)		74,970	74,970	74,970	74,970	74,970	74,970	74,970	74,970	
Travel Adjustment		-10,250	-2,116	-11,070	-2,888	-5,426	-4,979	-4,774	-4,774	
Adjusted min available after travel and non-case		64,720	72,854	63,900	72,082	69,544	69,991	70,196	70,196	
Number of Judges & Refs total		6.00	5.00	7.00	11.00	11.00	4.00	6.00	6.00	56.00
Judge Minutes Available		388,320	364,270	447,300	792,897	764,980	279,962	421,173	421,173	3,880,076
Workload compared to Resources (in minutes)		-17,422	95,137	111	127,285	167,363	-15,108	72,486	56,460	486,313
Weighted Case Filing Judicial Officer Need		5.73	6.31	7.00	12.77	13.41	3.78	7.03	6.80	62.83
Treatment Court Need		0.133	0.316	0.266	0.399	0.266			0.266	1.646
Total Judicial Officer Need		5.86	6.62	7.27	13.16	13.67	3.78	7.03	7.07	64.46
Current Total Judges/Referees		6.00	5.00	7.00	11.00	11.00	4.00	6.00	6.00	56.00
2018 Excess (Shortage) of Judicial FTE		0.14	(1.62)	(0.27)	(2.16)	(2.67)	0.22	(1.03)	(1.07)	(8.46)
2017 Excess (Shortage) of Judicial FTE		0.35	(1.57)	(0.04)	(1.92)	(2.91)	0.14	(0.20)	(1.70)	(7.85)
2018 Percent Excess (Shortage) of Judicial FTE		2.3%	-32.4%	-3.8%	-19.7%	-24.3%	5.4%	-17.2%	-17.8%	-15.1%

ATTACHMENT 3B – Weighted Case Load Report (2017)

JUDICIAL OFFICER WEIGHTED CASELOAD STUDY										
BASED ON 2017 CASE FILINGS										
Based on Total Judicial Officers as of December 31, 2017										
		Unit 1		Unit 2		Unit 3		Unit 4		
Case Type	Case Weight	NE	NEC	SE	EC	SC	SW	NW	NC	ALL
Criminal Major	181.29	475	630	641	1,583	1,969	345	655	994	7,292
Criminal Minor	26.48	2,492	1,917	2,461	3,826	4,630	1,614	2,922	2,125	21,987
Criminal Summary	0.37	8,478	7,711	12,067	13,799	15,166	8,857	12,482	13,185	91,745
Civil Major	671.05	33	52	43	119	121	53	69	78	568
Civil Minor	54.86	904	1,452	1,112	1,953	1,858	535	835	983	9,632
Civil Summary	6.65	1,157	2,105	1,196	2,386	2,919	945	1,420	1,669	13,797
Family Major	152.14	204	299	271	725	578	189	277	423	2,966
Family Minor	53.63	412	330	372	614	779	144	272	340	3,263
Family Summary	46.44	26	55	32	115	98	29	33	40	428
Probate Major	228.76	56	52	96	122	92	37	70	75	600
Probate Minor	32.02	101	141	420	434	263	125	168	198	1,850
Probate Summary	9.93	374	146	381	323	474	297	601	423	3,019
Juvenile Delinquency	106.60	94	163	64	409	136	29	57	40	992
Juvenile Dependency	239.18	118	215	125	243	276	101	129	152	1,359
Juvenile - Other	30.00	20	36	32	37	83	14	14	31	267
Total Filings		14,944	15,304	19,313	26,688	29,442	13,314	20,004	20,756	159,765
Weighted Filings		347,612	449,859	423,191	892,677	939,153	260,669	425,265	512,413	4,250,839
Presiding judge time at 47.14 min/day		9,664	9,664	9,664	9,664	9,664	9,664	9,664	9,664	77,310
Total workload		357,275	459,523	432,855	902,341	948,817	270,333	434,929	522,076	4,328,148
Judge Year (Minutes) 205 Days		86,100	86,100	86,100	86,100	86,100	86,100	86,100	86,100	
Avg. Non-Case time for all judicial FTEs 54.29 min/day		11,130	11,130	11,130	11,130	11,130	11,130	11,130	11,130	
Adjusted Judge Year (judge year less non case time)		74,970	74,970	74,970	74,970	74,970	74,970	74,970	74,970	
Travel Adjustment		-10,250	-2,116	-11,070	-2,888	-5,426	-4,979	-4,774	-4,774	
Adjusted min available after travel and non-case		64,720	72,854	63,900	72,082	69,544	69,991	70,196	70,196	
Number of Judges & Refs total		6.00	5.00	7.00	11.00	11.00	4.00	6.00	6.00	56.00
Judge Minutes Available		388,320	364,270	447,300	792,897	764,980	279,962	421,173	421,173	3,880,076
Workload compared to Resources (in minutes)		-31,045	95,253	-14,445	109,444	183,837	-9,629	13,755	100,903	448,072
Weighted Case Filing Judicial Officer Need		5.52	6.31	6.77	12.52	13.64	3.86	6.20	7.44	62.26
Treatment Court Need		0.133	0.266	0.266	0.399	0.266			0.266	1.596
Total Judicial Officer Need		5.65	6.57	7.04	12.92	13.91	3.86	6.20	7.70	63.86
Current Total Judges/Referees		6.00	5.00	7.00	11.00	11.00	4.00	6.00	6.00	56.00
2017 Excess (Shortage) of Judicial FTE		0.35	(1.57)	(0.04)	(1.92)	(2.91)	0.14	(0.20)	(1.70)	(7.86)
2016 Excess (Shortage) of Judicial FTE		0.09	(1.26)	(0.02)	(1.63)	(3.21)	0.02	(0.87)	(1.89)	(8.77)

ATTACHMENT 3C – Weighted Case Load Report (2016)

JUDICIAL OFFICER WEIGHTED CASELOAD STUDY										
BASED ON 2016 CASE FILINGS										
Based on Total Judicial Officers as of December 31, 2016										
Case Type	Case Weight	Unit 1		Unit 2		Unit 3		Unit 4		ALL
		NE	NEC	SE	EC	SC	SW	NW	NC	
Criminal Major	181.29	465	602	631	1,582	2,081	412	734	1,001	7,508
Criminal Minor	26.48	2,366	1,960	2,399	2,852	4,840	1,674	2,887	1,968	20,946
Criminal Summary	0.37	8,614	7,117	13,414	14,097	16,745	8,932	12,541	11,676	93,136
Civil Major	671.05	35	39	38	130	128	55	116	89	630
Civil Minor	54.86	1,005	1,403	1,189	1,812	1,739	580	982	1,045	9,755
Civil Summary	6.65	1,000	1,541	1,103	2,352	2,647	829	1,376	1,566	12,414
Family Major	152.14	186	325	312	754	539	203	264	497	3,080
Family Minor	53.63	558	364	376	615	893	146	337	431	3,720
Family Summary	46.44	24	34	37	112	70	24	34	35	370
Probate Major	228.76	61	44	93	137	113	32	67	56	603
Probate Minor	32.02	140	144	349	425	225	105	144	153	1,685
Probate Summary	9.93	337	159	336	321	461	281	663	381	2,939
Juvenile Delinquency	106.60	91	149	99	374	196	29	51	60	1,049
Juvenile Dependency	239.18	158	195	104	251	236	63	106	133	1,246
Juvenile - Other	30.00	5	17	15	46	45	18	9	9	164
Total Filings		15,045	14,093	20,495	25,860	30,958	13,383	20,311	19,100	159,245
Weighted Filings		364,173	426,892	421,961	872,137	959,990	268,565	472,418	525,694	4,311,829
Presiding judge time at 47.14 min/day		9,664	9,664	9,664	9,664	9,664	9,664	9,664	9,664	77,310
Total workload		373,836	436,556	431,625	881,801	969,654	278,228	482,082	535,357	4,389,139
Judge Year (Minutes) 205 Days		86,100	86,100	86,100	86,100	86,100	86,100	86,100	86,100	
Avg. Non-Case time for all judicial FTEs 54.29 min/day		11,130	11,130	11,130	11,130	11,130	11,130	11,130	11,130	
Adj Judge Year (judge yr less non case time)		74,970	74,970	74,970	74,970	74,970	74,970	74,970	74,970	
Travel Adjustment		-10,250	-2,116	-11,070	-2,888	-5,426	-4,979	-4,774	-4,774	
Adj min available after travel and non-case		64,720	72,854	63,900	72,082	69,544	69,991	70,196	70,196	
Number of Judges & Refs total		6.00	5.00	7.00	11.00	11.00	4.00	6.00	6.00	56.00
Judge Minutes Available		388,320	364,270	447,300	792,897	764,980	279,962	421,173	421,173	3,880,076
Workload compared to Resources (in minutes)		-14,484	72,286	-15,675	88,904	204,673	-1,734	60,908	114,184	509,063
Weighted Case Filing Judicial Officer Need		5.78	5.99	6.75	12.23	13.94	3.98	6.87	7.63	63.17
Treatment Court Need		0.133	0.266	0.266	0.399	0.266			0.266	1.596
Total Judicial Officer Need		5.91	6.26	7.02	12.63	14.21	3.98	6.87	7.89	64.77
Current Total Judges/Referees		6.00	5.00	7.00	11.00	11.00	4.00	6.00	6.00	56.00
2016 Excess (Shortage) of Judicial FTE		0.09	(1.26)	(0.02)	(1.63)	(3.21)	0.02	(0.87)	(1.89)	(8.77)
2015 Excess (Shortage) of Judicial FTE		0.38	(0.07)	(0.27)	(0.94)	(3.01)	(0.55)	(1.97)	(2.60)	(9.02)
5 asbestos cases in Cass County counted as 5 cases										

ATTACHMENT 3D – Weighted Case Load Report (2015)

JUDICIAL OFFICER WEIGHTED CASELOAD STUDY										
BASED ON 2015 CASE FILINGS										
Based on Total Judicial Officers as of December 31, 2015										
Case Type	Case Weight	Unit 1		Unit 2		Unit 3		Unit 4		ALL
		NE	NEC	SE	EC	SC	SW	NW	NC	
Criminal Major	181.29	556	541	591	1,379	1,896	416	954	1,078	7,411
Criminal Minor	26.48	2,724	2,190	2,571	2,873	4,377	2,293	3,532	2,394	22,954
Criminal Summary	0.37	12,639	8,494	14,984	14,972	20,134	13,513	16,490	13,962	115,188
Civil Major	671.05	30	37	48	125	136	64	100	95	635
Civil Minor	54.86	1,087	1,274	1,207	1,722	1,922	652	968	1,169	10,001
Civil Summary	6.65	980	1,375	1,259	2,279	2,702	858	1,342	1,562	12,357
Family Major	152.14	220	304	298	710	633	222	235	473	3,095
Family Minor	53.63	738	427	430	660	964	163	356	527	4,265
Family Summary	46.44	47	39	47	126	61	27	27	40	414
Probate Major	228.76	70	57	102	117	98	50	150	78	722
Probate Minor	32.02	114	162	398	400	202	127	266	180	1,849
Probate Summary	9.93	411	131	405	351	529	334	865	456	3,482
Juvenile Delinquency	106.60	85	153	91	436	258	46	61	76	1,206
Juvenile Dependency	239.18	160	180	123	239	211	67	141	146	1,267
Juvenile - Other	30.00	4	19	24	27	39	2	8	6	129
Total Filings		19,865	15,383	22,578	26,416	34,162	18,834	25,495	22,242	184,975
Weighted Filings		410,313	413,497	438,085	821,898	945,866	309,137	549,700	575,678	4,464,175
Presiding judge time at 47.14 min/day		9,664	9,664	9,664	9,664	9,664	9,664	9,664	9,664	77,310
Total workload		419,977	423,161	447,749	831,561	955,530	318,801	559,364	585,341	4,541,485
Judge Year (Minutes) 205 Days		86,100	86,100	86,100	86,100	86,100	86,100	86,100	86,100	
Avg. Non-Case time for all judicial FTEs 54.29 min/day		11,130	11,130	11,130	11,130	11,130	11,130	11,130	11,130	
Adj Judge Year (judge yr less non case time)		74,970	74,970	74,970	74,970	74,970	74,970	74,970	74,970	
Travel Adjustment		-10,250	-2,116	-11,070	-2,888	-5,426	-4,979	-4,774	-4,774	
Adj min available after travel and non-case		64,720	72,854	63,900	72,082	69,544	69,991	70,196	70,196	
Number of Judges & Refs total		7.00	6.00	7.00	11.00	11.00	4.00	6.00	6.00	58.00
Judge Minutes Available		453,040	437,124	447,300	792,897	764,980	279,962	421,173	421,173	4,017,650
Workload compared to Resources (in minutes)		-33,063	-13,963	449	38,664	190,550	38,839	138,190	164,168	523,835
Weighted Case Filing Judicial Officer Need		6.49	5.81	7.01	11.54	13.74	4.55	7.97	8.34	65.44
Treatment Court Need		0.133	0.266	0.266	0.399	0.266			0.266	1.596
Total Judicial Officer Need		6.62	6.07	7.27	11.94	14.01	4.55	7.97	8.60	67.02
Current Total Judges/Referees		7.00	6.00	7.00	11.00	11.00	4.00	6.00	6.00	58.00
2015 Excess (Shortage) of Judicial FTE		0.38	(0.07)	(0.27)	(0.94)	(3.01)	(0.55)	(1.97)	(2.60)	(9.02)
2014 Excess (Shortage) of Judicial FTE		0.57	0.54	(0.27)	(0.73)	(2.77)	(1.50)	(4.48)	(1.89)	(10.54)
14 asbestos cases in Cass County counted as 1 case										

ATTACHMENT 3E – Weighted Case Load Report (2014)

JUDICIAL OFFICER WEIGHTED CASELOAD STUDY										
BASED ON 2014 CASE FILINGS										
Based on 2014 Redistricting										
Case Type	Case Weight	Unit 1		Unit 2		Unit 3		Unit 4		ALL
		NE	NEC	SE	EC	SC	SW	NW	NC	
Criminal Major	181.29	565	522	597	1,320	1,585	445	1,089	983	7,106
Criminal Minor	26.48	2,540	2,257	2,625	3,370	4,871	2,692	3,808	2,574	24,737
Criminal Summary	0.37	12,659	9,380	14,014	14,439	22,257	15,194	14,416	14,500	116,859
Civil Major	671.05	37	43	41	106	99	42	137	60	565
Civil Minor	54.86	925	1,427	1,358	1,846	1,909	576	924	857	9,822
Civil Summary	6.65	886	1,099	1,362	2,479	2,703	913	1,111	1,296	11,849
Family Major	152.14	222	318	340	686	567	236	212	448	3,029
Family Minor	53.63	720	621	421	750	872	169	366	533	4,452
Family Summary	46.44	26	29	32	121	64	32	21	30	355
Probate Major	228.76	87	63	91	137	95	57	160	92	782
Probate Minor	32.02	142	207	387	402	170	154	357	206	2,025
Probate Summary	9.93	405	154	393	326	458	412	1,161	435	3,744
Juvenile Delinquency	106.60	121	188	94	399	277	37	63	56	1,235
Juvenile Dependency	239.18	113	183	88	181	157	84	81	145	1,032
Juvenile - Other	30.00	5	7	2	34	24	3	8	5	88
Total Filings		19,453	16,498	21,845	26,596	36,108	21,046	23,914	22,220	187,680
Weighted Filings		397,981	441,940	438,027	807,275	849,224	316,076	592,356	518,528	4,361,407
Presiding judge time at 47.14 min/day		9,664	9,664	9,664	9,664	9,664	9,664	9,664	9,664	77,310
Total workload		407,645	451,603	447,691	816,939	858,888	325,740	602,019	528,192	4,438,716
Judge Year (Minutes) 205 Days		86,100	86,100	86,100	86,100	86,100	86,100	86,100	86,100	
Avg. Non-Case time for all judicial FTEs 54.29 min/day		11,130	11,130	11,130	11,130	11,130	11,130	11,130	11,130	
Adj Judge Year (judge yr less non case time)		74,970	74,970	74,970	74,970	74,970	74,970	74,970	74,970	
Travel Adjustment		-10,250	-2,116	-11,070	-2,888	-5,426	-4,979	-4,774	-4,774	
Adj min available after travel and non-case		64,720	72,854	63,900	72,082	69,544	69,991	70,196	70,196	
Number of Judges & Refs total		7.00	7.00	7.00	11.00	9.85	3.15	4.10	5.90	55.00
Judge Minutes Available		453,040	509,978	447,300	792,897	685,005	220,470	287,802	414,154	3,810,646
Workload compared to Resources (in minutes)		-45,396	-58,375	391	24,042	173,883	105,270	314,218	114,038	628,071
Weighted Case Filing Judicial Officer Need		6.30	6.20	7.01	11.33	12.35	4.65	8.58	7.52	63.94
Treatment Court Need		0.133	0.266	0.266	0.399	0.266			0.266	1.596
Total Judicial Officer Need		6.43	6.46	7.27	11.73	12.62	4.65	8.58	7.79	65.54
Current Total Judges/Referees		7.00	7.00	7.00	11.00	9.85	3.15	4.10	5.90	55.00
2014 Excess (Shortage) of Judicial FTE		0.57	0.54	(0.27)	(0.73)	(2.77)	(1.50)	(4.48)	(1.89)	(10.54)
2013 Excess (Shortage) of Judicial FTE		0.72	(0.02)	0.12	(0.64)	(2.68)	(1.46)	(3.28)	(1.61)	(8.85)
14 asbestos cases in Cass County counted as 7 cases										

ATTACHMENT 3F – Weighted Case Load Report (2017/2018 Average)

JUDICIAL OFFICER WEIGHTED CASELOAD STUDY
BASED ON AVERAGE OF 2017 and 2018 CASE FILINGS - Case filings through August 31, 2018 annualized
Based on Total Judicial Officers as of August 31, 2018

Case Type	Case Weight	Unit 1		Unit 2		Unit 3		Unit 4		ALL
		NE	NEC	SE	EC	SC	SW	NW	NC	
Criminal Major	181.29	474	632	608	1,592	1,957	320	717	910	7,209
Criminal Minor	26.48	2,580	2,029	2,305	3,897	4,495	1,520	3,137	2,114	22,076
Criminal Summary	0.37	9,096	7,941	12,325	13,703	16,026	8,524	12,573	12,843	93,030
Civil Major	671.05	38	58	53	124	115	57	77	65	586
Civil Minor	54.86	905	1,355	1,208	2,104	1,882	565	881	960	9,859
Civil Summary	6.65	1,156	1,861	1,365	2,583	2,937	1,025	1,648	1,758	14,332
Family Major	152.14	212	312	293	726	600	200	277	409	3,027
Family Minor	53.63	390	330	335	526	705	137	254	343	3,020
Family Summary	46.44	33	43	38	119	87	33	31	35	418
Probate Major	228.76	61	54	98	114	84	36	67	70	584
Probate Minor	32.02	135	139	411	431	262	114	178	201	1,869
Probate Summary	9.93	389	162	365	326	461	303	682	387	3,075
Juvenile Delinquency	106.60	83	151	80	364	149	30	50	43	950
Juvenile Dependency	239.18	115	211	129	258	281	95	146	179	1,414
Juvenile - Other	30.00	19	41	33	39	105	14	19	35	303
Total Filings		15,686	15,316	19,644	26,904	30,144	12,971	20,736	20,351	161,752
Weighted Filings		354,423	449,801	430,469	901,598	930,917	257,930	454,630	490,191	4,269,959
Presiding judge time at 47.14 min/day		9,664	9,664	9,664	9,664	9,664	9,664	9,664	9,664	77,310
Total workload		364,087	459,465	440,133	911,262	940,580	267,594	464,294	499,855	4,347,269
Judge Year (Minutes) 205 Days		86,100	86,100	86,100	86,100	86,100	86,100	86,100	86,100	
Avg. Non-Case time for all judicial FTEs 54.29 min/day		11,130	11,130	11,130	11,130	11,130	11,130	11,130	11,130	
Adjusted Judge Year (judge year less non case time)		74,970	74,970	74,970	74,970	74,970	74,970	74,970	74,970	
Travel Adjustment		-10,250	-2,116	-11,070	-2,888	-5,426	-4,979	-4,774	-4,774	
Adjusted min available after travel and non-case		64,720	72,854	63,900	72,082	69,544	69,991	70,196	70,196	
Number of Judges & Refs total		6.00	5.00	7.00	11.00	11.00	4.00	6.00	6.00	56.00
Judge Minutes Available		388,320	364,270	447,300	792,897	764,980	279,962	421,173	421,173	3,880,076
Workload compared to Resources (in minutes)		-24,233	95,195	-7,167	118,365	175,600	-12,368	43,121	78,681	467,193
Weighted Case Filing Judicial Officer Need		5.63	6.31	6.89	12.64	13.53	3.82	6.61	7.12	62.55
Treatment Court Need		0.133	0.291	0.266	0.399	0.266			0.266	1.621
Total Judicial Officer Need		5.76	6.60	7.15	13.04	13.79	3.82	6.61	7.39	64.17
Current Total Judges/Referees		6.00	5.00	7.00	11.00	11.00	4.00	6.00	6.00	56.00
2017/2018 Excess (Shortage) of Judicial FTE		0.24	(1.60)	(0.15)	(2.04)	(2.79)	0.18	(0.61)	(1.39)	(8.17)
2016/2017 Excess (Shortage) of Judicial FTE		0.22	(1.42)	(0.03)	(1.77)	(3.06)	0.08	(0.53)	(1.80)	(8.31)
2017/18 Percent Excess (Shortage) of Judicial FTE		4.0%	-32.0%	-2.2%	-18.6%	-25.4%	4.4%	-10.2%	-23.1%	-14.6%

ATTACHMENT 3G – Weighted Case Load Report (2016/2017 Average)

JUDICIAL OFFICER WEIGHTED CASELOAD STUDY										
BASED ON AVERAGE OF 2016 and 2017 CASE FILINGS										
Based on Total Judicial Officers as of December 31, 2017										
Case Type	Case Weight	Unit 1		Unit 2		Unit 3		Unit 4		ALL
		NE	NEC	SE	EC	SC	SW	NW	NC	
Criminal Major	181.29	470	616	636	1,583	2,025	379	695	998	7,400
Criminal Minor	26.48	2,429	1,939	2,430	3,339	4,735	1,644	2,905	2,047	21,467
Criminal Summary	0.37	8,546	7,414	12,741	13,948	15,956	8,895	12,512	12,431	92,441
Civil Major	671.05	34	46	41	125	125	54	93	84	599
Civil Minor	54.86	955	1,428	1,151	1,883	1,799	558	909	1,014	9,694
Civil Summary	6.65	1,079	1,823	1,150	2,369	2,783	887	1,398	1,618	13,106
Family Major	152.14	195	312	292	740	559	196	271	460	3,023
Family Minor	53.63	485	347	374	615	836	145	305	386	3,492
Family Summary	46.44	25	45	35	114	84	27	34	38	399
Probate Major	228.76	59	48	95	130	103	35	69	66	602
Probate Minor	32.02	121	143	385	430	244	115	156	176	1,768
Probate Summary	9.93	356	153	359	322	468	289	632	402	2,979
Juvenile Delinquency	106.60	93	156	82	392	166	29	54	50	1,021
Juvenile Dependency	239.18	138	205	115	247	256	82	118	143	1,303
Juvenile - Other	30.00	13	27	24	42	64	16	12	20	216
Total Filings		14,995	14,699	19,904	26,274	30,200	13,349	20,158	19,928	159,505
Weighted Filings		355,892	438,376	422,576	882,407	949,572	264,617	448,841	519,053	4,281,334
Presiding judge time at 47.14 min/day		9,664	9,664	9,664	9,664	9,664	9,664	9,664	9,664	77,310
Total workload		365,556	448,039	432,240	892,071	959,235	274,281	458,505	528,717	4,358,644
Judge Year (Minutes) 205 Days		86,100	86,100	86,100	86,100	86,100	86,100	86,100	86,100	
Avg. Non-Case time for all judicial FTEs 54.29 min/day		11,130	11,130	11,130	11,130	11,130	11,130	11,130	11,130	
Adjusted Judge Year (judge year less non case time)		74,970	74,970	74,970	74,970	74,970	74,970	74,970	74,970	
Travel Adjustment		-10,250	-2,116	-11,070	-2,888	-5,426	-4,979	-4,774	-4,774	
Adjusted min available after travel and non-case		64,720	72,854	63,900	72,082	69,544	69,991	70,196	70,196	
Number of Judges & Refs total		6.00	5.00	7.00	11.00	11.00	4.00	6.00	6.00	56.00
Judge Minutes Available		388,320	364,270	447,300	792,897	764,980	279,962	421,173	421,173	3,880,076
Workload compared to Resources (in minutes)		-22,764	83,769	-15,060	99,174	194,255	-5,682	37,332	107,543	478,568
Weighted Case Filing Judicial Officer Need		5.65	6.15	6.76	12.38	13.79	3.92	6.53	7.53	62.71
Treatment Court Need		0.133	0.266	0.266	0.399	0.266			0.266	1.596
Total Judicial Officer Need		5.78	6.42	7.03	12.77	14.06	3.92	6.53	7.80	64.31
Current Total Judges/Referees		6.00	5.00	7.00	11.00	11.00	4.00	6.00	6.00	56.00
2016/2017 Excess (Shortage) of Judicial FTE		0.22	(1.42)	(0.03)	(1.77)	(3.06)	0.08	(0.53)	(1.80)	(8.31)
2015/2016 Excess (Shortage) of Judicial FTE		(0.27)	(1.17)	(0.15)	(1.28)	(3.11)	(0.27)	(1.42)	(2.25)	(9.90)

ATTACHMENT 3H – Weighted Case Load Report (2015/2016 Average)

JUDICIAL OFFICER WEIGHTED CASELOAD STUDY										
BASED ON AVERAGE OF 2015 and 2016 CASE FILINGS										
Based on Total Judicial Officers as of December 31, 2016										
Case Type	Case Weight	Unit 1		Unit 2		Unit 3		Unit 4		ALL
		NE	NEC	SE	EC	SC	SW	NW	NC	
Criminal Major	181.29	511	572	611	1,481	1,989	414	844	1,040	7,460
Criminal Minor	26.48	2,545	2,075	2,485	2,863	4,609	1,984	3,210	2,181	21,950
Criminal Summary	0.37	10,627	7,806	14,199	14,535	18,440	11,223	14,516	12,819	104,162
Civil Major	671.05	33	38	43	128	132	60	108	92	633
Civil Minor	54.86	1,046	1,339	1,198	1,767	1,831	616	975	1,107	9,878
Civil Summary	6.65	990	1,458	1,181	2,316	2,675	844	1,359	1,564	12,386
Family Major	152.14	203	315	305	732	586	213	250	485	3,088
Family Minor	53.63	648	396	403	638	929	155	347	479	3,993
Family Summary	46.44	36	37	42	119	66	26	31	38	392
Probate Major	228.76	66	51	98	127	106	41	109	67	663
Probate Minor	32.02	127	153	374	413	214	116	205	167	1,767
Probate Summary	9.93	374	145	371	336	495	308	764	419	3,211
Juvenile Delinquency	106.60	88	151	95	405	227	38	56	68	1,128
Juvenile Dependency	239.18	159	188	114	245	224	65	124	140	1,257
Juvenile - Other	30.00	5	18	20	37	42	10	9	8	147
Total Filings		17,455	14,738	21,537	26,138	32,560	16,109	22,903	20,671	172,110
Weighted Filings		387,243	420,195	430,023	847,017	952,928	288,851	511,059	550,686	4,388,002
Presiding judge time at 47.14 min/day		9,664	9,664	9,664	9,664	9,664	9,664	9,664	9,664	77,310
Total workload		396,907	429,859	439,687	856,681	962,592	298,515	520,723	560,349	4,465,312
Judge Year (Minutes) 205 Days		86,100	86,100	86,100	86,100	86,100	86,100	86,100	86,100	
Avg. Non-Case time for all judicial FTEs 54.29 min/day		11,130	11,130	11,130	11,130	11,130	11,130	11,130	11,130	
Adj Judge Year (judge yr less non case time)		74,970	74,970	74,970	74,970	74,970	74,970	74,970	74,970	
Travel Adjustment		-10,250	-2,116	-11,070	-2,888	-5,426	-4,979	-4,774	-4,774	
Adj min available after travel and non-case		64,720	72,854	63,900	72,082	69,544	69,991	70,196	70,196	
Number of Judges & Refs total		6.00	5.00	7.00	11.00	11.00	4.00	6.00	6.00	56.00
Judge Minutes Available		388,320	364,270	447,300	792,897	764,980	279,962	421,173	421,173	3,880,076
Workload compared to Resources (in minutes)		8,587	65,589	-7,613	63,784	197,612	18,552	99,549	139,176	585,236
Weighted Case Filing Judicial Officer Need		6.13	5.90	6.88	11.88	13.84	4.27	7.42	7.98	64.31
Treatment Court Need		0.133	0.266	0.266	0.399	0.266			0.266	1.596
Total Judicial Officer Need		6.27	6.17	7.15	12.28	14.11	4.27	7.42	8.25	65.90
Current Total Judges/Referees		6.00	5.00	7.00	11.00	11.00	4.00	6.00	6.00	56.00
2015/2016 Excess (Shortage) of Judicial FTE		(0.27)	(1.17)	(0.15)	(1.28)	(3.11)	(0.27)	(1.42)	(2.25)	(9.90)
2014/2015 Excess (Shortage) of Judicial FTE		0.47	(0.27)	(0.27)	(0.87)	(2.31)	(0.60)	(2.27)	(2.20)	(8.32)

ATTACHMENT 3I – Weighted Case Load Report (2014/2015 Average)

JUDICIAL OFFICER WEIGHTED CASELOAD STUDY										
BASED ON AVERAGE OF 2014 and 2015 CASE FILINGS										
Based on Total Judicial Officers as of December 31, 2015										
Case Type	Case Weight	Unit 1		Unit 2		Unit 3		Unit 4		ALL
		NE	NEC	SE	EC	SC	SW	NW	NC	
Criminal Major	181.29	561	532	594	1,350	1,741	431	1,022	1,031	7,259
Criminal Minor	26.48	2,632	2,224	2,598	3,122	4,624	2,493	3,670	2,484	23,846
Criminal Summary	0.37	12,649	8,937	14,499	14,706	21,196	14,354	15,453	14,231	116,024
Civil Major	671.05	34	40	45	116	118	53	119	78	600
Civil Minor	54.86	1,006	1,351	1,283	1,784	1,916	614	946	1,013	9,912
Civil Summary	6.65	933	1,237	1,311	2,379	2,703	886	1,227	1,429	12,103
Family Major	152.14	221	311	319	698	600	229	224	461	3,062
Family Minor	53.63	729	524	426	705	918	166	361	530	4,359
Family Summary	46.44	37	34	40	124	63	30	24	35	385
Probate Major	228.76	79	60	97	127	97	54	155	85	752
Probate Minor	32.02	128	185	393	401	186	141	312	193	1,937
Probate Summary	9.93	408	143	399	339	494	373	1,013	446	3,613
Juvenile Delinquency	106.60	103	171	93	418	268	42	62	66	1,221
Juvenile Dependency	239.18	137	182	106	210	184	76	111	146	1,150
Juvenile - Other	30.00	5	13	13	31	32	3	8	6	109
Total Filings		19,659	15,941	22,212	26,506	35,135	19,940	24,705	22,231	186,328
Weighted Filings		404,147	427,718	438,056	814,586	897,545	312,607	571,028	547,103	4,412,791
Presiding judge time at 47.14 min/day		9,664	9,664	9,664	9,664	9,664	9,664	9,664	9,664	77,310
Total workload		413,811	437,382	447,720	824,250	907,209	322,270	580,691	556,767	4,490,101
Judge Year (Minutes) 205 Days		86,100	86,100	86,100	86,100	86,100	86,100	86,100	86,100	
Avg. Non-Case time for all judicial FTEs 54.29 min/day		11,130	11,130	11,130	11,130	11,130	11,130	11,130	11,130	
Adj Judge Year (judge yr less non case time)		74,970	74,970	74,970	74,970	74,970	74,970	74,970	74,970	
Travel Adjustment		-10,250	-2,116	-11,070	-2,888	-5,426	-4,979	-4,774	-4,774	
Adj min available after travel and non-case		64,720	72,854	63,900	72,082	69,544	69,991	70,196	70,196	
Number of Judges & Refs total		7.00	6.00	7.00	11.00	11.00	4.00	6.00	6.00	58.00
Judge Minutes Available		453,040	437,124	447,300	792,897	764,980	279,962	421,173	421,173	4,017,650
Workload compared to Resources (in minutes)		-39,229	258	420	31,353	142,229	42,308	159,518	135,593	472,451
Weighted Case Filing Judicial Officer Need		6.39	6.00	7.01	11.43	13.05	4.60	8.27	7.93	64.69
Treatment Court Need		0.133	0.266	0.266	0.399	0.266			0.266	1.596
Total Judicial Officer Need		6.53	6.27	7.27	11.83	13.31	4.60	8.27	8.20	66.29
Current Total Judges/Referees		7.00	6.00	7.00	11.00	11.00	4.00	6.00	6.00	58.00
2014/2015 Excess (Shortage) of Judicial FTE		0.47	(0.27)	(0.27)	(0.83)	(2.31)	(0.60)	(2.27)	(2.20)	(8.29)
2013/2014 Excess (Shortage) of Judicial FTE		0.65	0.26	(0.14)	(0.69)	(2.72)	(1.48)	(3.88)	(1.75)	(9.76)

ATTACHMENT 4 – Asbestos Filings in ND 2014 to present

Case Index

NDODYPROD

Version: Internal Filed Date: 01/01/2014 to 09/18/2018 Sorted By: Case Number

Administrative Units Unit 1 Northeast Central District Grand Forks County Nelson County Northeast District Benson County Bottineau County Ca...

Cass County

Case Number	Style	Case Type Case Subtype	File Date	Case Status Date Current Case Status
09-2014-CV-01033	DeWayne Bauer vs. A. H. Bennett Company, et al.	Personal Injury Asbestos	04/16/2014	04/16/2014 Open
	Judicial Officer: Marquart, Steven L.			
09-2014-CV-01036	Ralph Miller vs. A. H. Bennett Company, et al.	Personal Injury Asbestos	04/16/2014	04/26/2017 Closed
	Judicial Officer: Irby, John C			
09-2014-CV-01051	James Murray vs. A.H. Bennett Company, et al.	Personal Injury Asbestos	04/17/2014	11/01/2017 Closed
	Judicial Officer: Bailey, Susan L			
09-2014-CV-01091	Alan Houn vs. A.H. Bennett Company, et al.	Personal Injury Asbestos	04/22/2014	11/25/2016 Closed
	Judicial Officer: Stiel, Stephannie			
09-2014-CV-01092	Jerome Houn vs. A.H. Bennett Company, et al.	Personal Injury Asbestos	04/22/2014	11/25/2016 Closed
	Judicial Officer: Irby, John C			
09-2014-CV-01250	Maynard R. Borner vs. A.H. Bennett Company, et al.	Personal Injury Asbestos	05/06/2014	01/30/2017 Closed
	Judicial Officer: Stiel, Stephannie			
09-2014-CV-01290	Nancy Hodge vs. A.O. Smith Corporation, et al.	Personal Injury Asbestos	05/08/2014	06/06/2016 Closed
	Judicial Officer: Racek, Frank L			

Case Index

NDODYPROD

Version: Internal Filed Date: 01/01/2014 to 09/18/2018 Sorted By: Case Number

Administrative Units	Unit 1	Northeast Central District	Grand Forks County	Nelson County	Northeast District	Benson County	Bottineau County	Ca...
09-2014-CV-01762	David Aaland, et al. vs. A.O. Smith Corporation, et al.		Personal Injury Asbestos		06/25/2014	06/25/2014		
	Judicial Officer: Marquart, Steven L.					Open		
09-2014-CV-01765	Judy Geier, et al. vs. A.H. Bennett Company, et al.		Personal Injury Asbestos		06/25/2014	03/05/2018		
	Judicial Officer: Irby, John C					Closed		
09-2014-CV-01768	Kimberly Netland, et al. vs. A.W. Chesterton Company, et al.		Personal Injury Asbestos		06/25/2014	03/28/2016		
	Judicial Officer: Racek, Frank L					Closed		
09-2014-CV-01770	Violet Pfenning vs. A.H. Bennett Company, et al.		Personal Injury Asbestos		06/25/2014	08/15/2017		
	Judicial Officer: Stiel, Stephannie					Closed		
09-2014-CV-01773	James Rheault vs. A.O. Smith Corporation, et al.		Personal Injury Asbestos		06/25/2014	11/21/2017		
	Judicial Officer: Irby, John C					Closed		
09-2014-CV-01775	Gwen Berry vs. A.O. Smith Corporation, et al.		Personal Injury Asbestos		06/25/2014	06/25/2014		
	Judicial Officer: Marquart, Steven L.					Open		
09-2014-CV-03195	Steven Boyd vs. A.H. Bennett Company, et al.		Personal Injury Asbestos		11/13/2014	08/15/2017		
	Judicial Officer: Racek, Frank L					Closed		
09-2015-CV-01990	Jerome C Birkeland vs. A.H. Bennett Company, et al.		Personal Injury Asbestos		08/06/2015	09/11/2018		
	Judicial Officer: Marquart, Steven L.					Closed		

Case Index

NDODYPROD

Version: Internal Filed Date: 01/01/2014 to 09/18/2018 Sorted By: Case Number

Administrative Units	Unit 1	Northeast Central District	Grand Forks County	Nelson County	Northeast District	Benson County	Bottineau County	Ca...
09-2015-CV-01991	Donald C Anklaam vs. A.H. Bennett Company, et al.		Personal Injury Asbestos		08/06/2015	12/31/2017		
	Judicial Officer: Olson, Tom					Closed		
09-2015-CV-01997	Lyle A. Hovde vs. A.H. Bennett Company, et al.		Personal Injury Asbestos		08/07/2015	08/07/2015		
	Judicial Officer: Webb, Wade L					Open		
09-2015-CV-01998	Wallace J. Knoll vs. A.H. Bennett Company, et al.		Personal Injury Asbestos		08/07/2015	01/26/2018		
	Judicial Officer: McCullough, Steven E					Closed		
09-2015-CV-02001	James E. Sloan vs. A.H. Bennett Company, et al.		Personal Injury Asbestos		08/07/2015	08/07/2015		
	Judicial Officer: Webb, Wade L					Open		
09-2015-CV-02003	Rick Bartsch vs. A.H. Bennett Company, et al.		Personal Injury Asbestos		08/07/2015	06/26/2017		
	Judicial Officer: Stiel, Stephannie					Closed		
09-2015-CV-02011	Kyle P Wetzel vs. A.H. Bennett Company, et al.		Personal Injury Asbestos		08/07/2015	11/27/2017		
	Judicial Officer: Racek, Frank L					Closed		
09-2015-CV-02012	Dannis B. Woodard vs. A.H. Bennett Company, et al.		Personal Injury Asbestos		08/07/2015	06/12/2017		
	Judicial Officer: Racek, Frank L					Closed		
09-2015-CV-02018	Ginger Boor vs. A.H. Bennett Company, et al.		Personal Injury Asbestos		08/07/2015	10/10/2017		
	Judicial Officer: Olson, Tom					Closed		

Case Index

NDODYPROD

Version: Internal Filed Date: 01/01/2014 to 09/18/2018 Sorted By: Case Number

Administrative Units	Unit 1	Northeast Central District	Grand Forks County	Nelson County	Northeast District	Benson County	Bottineau County	Ca...
09-2015-CV-02019	Viola M. Reiswig vs. A.H. Bennett Company, et al.		Personal Injury Asbestos		08/07/2015	11/30/2017		
	Judicial Officer: Olson, Tom					Closed		
09-2015-CV-02020	Lynette Lunde vs. A.H. Bennett Company, et al.		Personal Injury Asbestos		08/07/2015	01/02/2018		
	Judicial Officer: Marquart, Steven L.					Closed		
09-2015-CV-02021	Carla J. Leingang vs. A.H. Bennett Company, et al.		Personal Injury Asbestos		08/07/2015	08/07/2015		
	Judicial Officer: Irby, John C					Open		
09-2015-CV-02022	Bessie Larmer vs. A.H. Bennett Company, et al.		Personal Injury Asbestos		08/07/2015	05/09/2018		
	Judicial Officer: Olson, Tom					Closed		
09-2015-CV-02024	Laverne Emineth vs. A.H. Bennett Company, et al.		Personal Injury Asbestos		08/07/2015	11/27/2017		
	Judicial Officer: Racek, Frank L					Closed		
09-2016-CV-01519	Linda Tweit, et al. vs. A.H. Bennett Company, et al.		Personal Injury Asbestos		08/02/2016	08/18/2018		
	Judicial Officer: Webb, Wade L					Closed		
09-2016-CV-02154	Michael Best, et al. vs. A.W. Kuettel & Sons, Inc., et al.		Personal Injury Asbestos		07/27/2016	03/08/2018		
	Judicial Officer: McCullough, Steven E					Closed		
09-2016-CV-02155	Roxanne Geurts, et al. vs. A.H. Bennett Company, et al.		Personal Injury Asbestos		07/27/2016	07/27/2016		
	Judicial Officer: Marquart, Steven L.					Open		

Case Index

NDODYPROD

Version: Internal Filed Date: 01/01/2014 to 09/18/2018 Sorted By: Case Number

Administrative Units	Unit 1	Northeast Central District	Grand Forks County	Nelson County	Northeast District	Benson County	Bottineau County	Ca...
09-2016-CV-02156	Cinda Haugen, et al. vs. A.H. Bennett Company, et al.		Personal Injury Asbestos		07/27/2016	06/26/2018	Inactive	
	Judicial Officer: Racek, Frank L							
09-2016-CV-02518	Judi Koehmstedt vs. A.W. Chesterton Company, et al.		Personal Injury Asbestos		08/30/2016	06/18/2018	Inactive	
	Judicial Officer: Herman, Douglas							
09-2017-CV-01450	Joyce Burhenn vs. A.W. Chesterton Company		Personal Injury Asbestos		05/26/2017	05/26/2017	Open	
	Judicial Officer: Webb, Wade L							
09-2017-CV-01454	Joyce Sang vs. 3M, et al.		Personal Injury Asbestos		05/26/2017	05/26/2017	Open	
	Judicial Officer: Bailey, Susan L							
09-2017-CV-01541	Leo Silbermagel vs. 3M, et al.		Personal Injury Asbestos		06/05/2017	09/17/2018	Closed	
	Judicial Officer: Stiel, Stephannie							
09-2017-CV-01551	Donna F Koch vs. 3M, et al.		Personal Injury Asbestos		06/06/2017	06/06/2017	Open	
	Judicial Officer: Irby, John C							
09-2017-CV-01552	Leroy Heilman vs. 3M, et al.		Personal Injury Asbestos		06/06/2017	06/06/2017	Open	
	Judicial Officer: Webb, Wade L							
09-2017-CV-01558	Helen Stark vs. 3M, et al.		Personal Injury Asbestos		06/06/2017	06/06/2017	Open	
	Judicial Officer: Marquart, Steven L.							

Case Index

NDODYPROD

Version: Internal Filed Date: 01/01/2014 to 09/18/2018 Sorted By: Case Number

Administrative Units	Unit 1	Northeast Central District	Grand Forks County	Nelson County	Northeast District	Benson County	Bottineau County	Ca...
09-2017-CV-01559	Ruth Allen vs. 3M, et al.			Personal Injury Asbestos		06/06/2017	06/06/2017	
	Judicial Officer: Bailey, Susan L						Open	
09-2017-CV-01564	Bruce Edmund Ellingson vs. 3M, et al.			Personal Injury Asbestos		06/06/2017	06/06/2017	
	Judicial Officer: Bailey, Susan L						Open	
09-2017-CV-01591	Jeffrey Seavy vs. 3M, et al.			Personal Injury Asbestos		06/07/2017	06/07/2017	
	Judicial Officer: Marquart, Steven L.						Open	
09-2017-CV-01625	Cecilia Schroeder vs. Advocate Asbestos Mines, Ltd., a Canadian Corporation, et al.			Personal Injury Asbestos		06/12/2017	06/12/2017	
	Judicial Officer: Bailey, Susan L						Open	
09-2017-CV-01634	Deborah Palmer vs. Abex Corporation, a Delaware Corporation, et al.			Personal Injury Asbestos		06/12/2017	06/12/2017	
	Judicial Officer: Marquart, Steven L.						Open	
09-2017-CV-01652	Bernice Shaw vs. Advocate Asbestos Mines, Ltd. a Canadian Corporation, et al.			Personal Injury Asbestos		06/14/2017	06/14/2017	
	Judicial Officer: Marquart, Steven L.						Open	
09-2017-CV-01655	Paul Dacey Thomas vs. Advocate Asbestos Mines, Ltd., a Canadian Corporation, et al.			Personal Injury Asbestos		06/14/2017	06/14/2017	
	Judicial Officer: Stiel, Stephannie						Open	
09-2018-CV-02167	Sally Wallock vs. A.H. Bennett Company, et al.			Personal Injury Asbestos		07/02/2018	07/02/2018	
	Judicial Officer: Webb, Wade L						Open	

Grand Total: 47

Printed on 09/18/2018 at 2:27 PM

Page 6 of 7

Case Index

NDODYPROD

Version: Internal Filed Date: 01/01/2014 to 09/18/2018 Sorted By: Case Number

Administrative Units	Unit 1	Northeast Central District	Grand Forks County	Nelson County	Northeast District	Benson County	Bottineau County	Ca...
----------------------	--------	----------------------------	--------------------	---------------	--------------------	---------------	------------------	-------

ATTACHMENT 5 – Interpreter Statistics Report 2013 through August 2018

Interpreters Statistics

NDODYPROD

Date Range: 01/01/2013 to 08/31/2018 Languages: Sign Language,Acholi,Afrikaans (South Africa),Albanian,Amerlic...

Report Options: Summary

East Central District Cass County Steele County Trall County

Cass County

Month and Year	Language	Number of Assignments	Total
January 2013	Arabic	2	
	Bosnian	6	
	Madi	1	
	Somali	15	
	Swahili	1	
	Vietnamese	1	26
February 2013	Bosnian	4	
	Hindi	1	
	Krahn	1	
	Nepali	1	
	Somali	10	17
March 2013	Arabic	1	
	Bosnian	3	
	Madi	1	
	Nepali	1	
	Sign Language	3	
	Somali	9	
	Spanish	1	
	Vietnamese	3	22
April 2013	Arabic	2	
	Bosnian	3	
	Hindi	2	
	Nepali	1	
	Sign Language	2	
	Somali	19	
	Spanish	2	
	Vietnamese	1	32
May 2013	Arabic	2	
	Bosnian	2	
	Nepali	1	
	Somali	5	10
June 2013	Arabic	2	
	Bosnian	4	
	Nepali	1	
	Somali	2	
	Spanish	1	
	Vietnamese	1	11
July 2013	Bosnian	4	
	Nepali	1	
	Sign Language	4	
	Somali	3	
	Vietnamese	2	14
August 2013	Arabic	8	

Printed on 9/17/2018 at 5:23 PM

Page 1 of 11

Interpreters Statistics

NDODYPROD

Date Range: 01/01/2013 to 08/31/2018 Languages: Sign Language,Acholi,Afrikaans (South Africa),Albanian,Amheric...

Report Options: Summary

East Central District Cass County Steele County Trall County

Cass County continued...

Month and Year	Language	Number of Assignments	Total
	Bosnian	6	
August 2013	Somali	2	16
September 2013	Arabic	7	
	Bosnian	3	
	Nepali	1	
	Sign Language	1	
	Somali	8	
	Spanish	1	
	Swahili	2	
	Vietnamese	1	24
October 2013	Arabic	8	
	Bosnian	1	
	Spanish	2	11
November 2013	Arabic	1	
	Somali	5	
	Spanish	1	
	Swahili	1	8
December 2013	Bosnian	2	
	Nepali	1	
	Somali	6	
	Spanish	1	
	Swahili	2	12
January 2014	Acholi	1	
	Somali	5	
	Swahili	1	7
February 2014	Bosnian	1	
	Somali	3	4
March 2014	Arabic	1	
	Somali	5	
	Swahili	1	7
April 2014	Arabic	1	
	Bosnian	2	
	Kirundi	1	
	Nepali	2	
	Somali	4	
	Spanish	4	14
May 2014	Arabic	4	
	Creole	1	
	Somali	20	
	Spanish	1	26
June 2014	Amheric	1	
	Arabic	2	
	Somali	7	

Interpreters Statistics

NDODYPROD

Date Range: 01/01/2013 to 08/31/2018 Languages: Sign Language,Acholi,Afrikaans (South Africa),Albanian,Amheric...

Report Options: Summary

East Central District Cass County Steele County Trail County

Cass County continued...

Month and Year	Language	Number of Assignments	Total
July 2014	Swahili	1	11
	Arabic	1	
	Chinese	1	
	Hakha Chin	3	
	Somali	4	9
August 2014	Arabic	6	
	Bosnian	3	
	Chinese	2	
	Dinka	1	
	Farsi	1	
	Hakha Chin	1	
	Nepali	1	
	Somali	4	
	Spanish	2	21
September 2014	Amheric	1	
	Bosnian	2	
	Hakha Chin	1	
	Nepali	2	
	Spanish	1	
	Vietnamese	1	8
October 2014	Arabic	1	
	Bosnian	1	
	French	1	
	Nepali	2	
	Sudanese	1	
	Vietnamese	1	7
November 2014	Amheric	2	
	Chinese	1	
	Farsi	1	
	French	1	
	Nepali	2	
	Somali	1	8
December 2014	Arabic	2	
	Kirundi	1	
	Nepali	1	
	Somali	1	
	Spanish	2	7
January 2015	French	2	
	Nepali	5	
	Somali	4	
	Spanish	3	14
February 2015	Albanian	1	
	Amheric	2	

Interpreters Statistics

NDODYPROD

Date Range: 01/01/2013 to 08/31/2018 Languages: Sign Language,Acholi,Afrikaans (South Africa),Albanian,Amheric...

Report Options: Summary

East Central District Cass County Steele County Traill County

Cass County continued...

Month and Year	Language	Number of Assignments	Total
February 2015	Mandarin	1	
	Nepali	1	
	Somali	3	8
March 2015	Albanian	1	
	Amheric	2	
	Bosnian	2	
	French	1	
	Kirundi	1	
	Mandarin	1	
	Nepali	2	
	Sign Language	1	
	Somali	6	17
	Kirundi	4	
April 2015	Nepali	5	
	Somali	1	
	Spanish	2	12
May 2015	Bosnian	3	
	Kirundi	1	
	Mandarin	1	
	Nepali	5	
	Sign Language	1	
	Somali	1	
	Spanish	3	15
	Vietnamese	1	
June 2015	Albanian	1	
	Amheric	1	
	Bosnian	1	
	Kirundi	2	
	Nepali	1	
	Somali	2	
	Spanish	2	
	Vietnamese	1	11
July 2015	Arabic	1	
	Kirundi	1	
	Mandarin	1	
	Somali	1	
	Spanish	4	
	Vietnamese	1	9
August 2015	Arabic	3	
	Dinka	1	
	Kirundi	1	
	Mandarin	2	
	Nepali	1	
	Somali	2	

Interpreters Statistics

NDODYPROD

Date Range: 01/01/2013 to 08/31/2018 Languages: Sign Language,Acholi,Afrikaans (South Africa),Albanian,Amerlic...

Report Options: Summary

East Central District Cass County Steele County Traill County

Cass County continued...

Month and Year	Language	Number of Assignments	Total
September 2015	Spanish	4	14
	Arabic	3	
	Bosnian	2	
	Chinese	1	
	French	2	
	Mandarin	2	
	Nepali	3	
	Somali	1	
	Spanish	4	
October 2015	Swahili	1	19
	Arabic	2	
	Bosnian	2	
	Kirundi	4	
	Mandarin	2	
	Nepali	1	
	Somali	3	
	Spanish	2	
	Swahili	2	
November 2015	Vietnamese	1	19
	Arabic	7	
	Bosnian	2	
	Kirundi	5	
	Mandarin	2	
	Nepali	2	
	Russian	1	
	Somali	2	
	Spanish	1	
December 2015	Vietnamese	1	23
	Arabic	5	
	Bosnian	2	
	French	1	
	Kirundi	1	
	Mandarin	1	
	Nepali	3	
	Sign Language	1	
	Somali	4	
January 2016	Swahili	4	22
	Amerlic	1	
	Bosnian	1	
	Liberian	2	
	Nepali	2	
	Russian	1	
	Somali	8	

Interpreters Statistics

NOODYPROD

Date Range: 01/01/2013 to 08/31/2018 Languages: Sign Language,Acholi,Afrikaans (South Africa),Albanian,Amerhc...

Report Options: Summary

East Central District Cass County Steele County Trall County

Cass County continued...

Month and Year	Language	Number of Assignments	Total
February 2016	Spanish	1	16
	Bosnian	1	
	French	1	
	Somali	1	
	Spanish	2	
March 2016	Ukrainian	1	6
	Arabic	2	
	Chinese	1	
	Creole	1	
	French	1	
	Kirundi	1	
	Nepali	5	
	Somali	3	
	Spanish	1	
	Swahili	1	16
April 2016	Arabic	1	
	Chinese	1	
	Nepali	4	
	Somali	2	
	Spanish	8	
	Swahili	4	
	Vietnamese	1	21
May 2016	Arabic	1	
	Nepali	3	
	Spanish	8	
	Swahili	1	13
June 2016	Arabic	2	
	Bosnian	2	
	Chinese	1	
	Creole	1	
	Nepali	6	
	Somali	2	
	Spanish	2	16
July 2016	Arabic	2	
	French	1	
	Kirundi	2	
	Liberian	1	
	Nepali	4	
	Somali	6	
	Spanish	5	
	Swahili	1	
	Vietnamese	2	24
August 2016	Arabic	2	

Interpreters Statistics

NDODYPROD

Date Range: 01/01/2013 to 08/31/2018 Languages: Sign Language,Acholi,Afrikaans (South Africa),Albanian,Amheric...

Report Options: Summary

East Central District Cass County Steele County Trall County

Cass County continued...

Month and Year	Language	Number of Assignments	Total
August 2016	Creole	1	
	Kirundi	1	
	Krahn	1	
	Nepali	4	
	Russian	1	
	Somali	5	
September 2016	Spanish	9	
	Swahili	4	28
	Arabic	1	
	French	1	
	Kirundi	1	
	Krahn	1	
	Liberian	1	
	Nepali	5	
	Somali	14	
	Spanish	1	
October 2016	Vietnamese	1	26
	Arabic	1	
	Cambodian	1	
	Creole	1	
	French	1	
	Kirundi	2	
	Nepali	1	
	Somali	5	
	Spanish	1	
	Swahili	3	16
November 2016	Kirundi	1	
	Liberian	1	
	Nepali	5	
	Russian	1	
	Somali	8	
	Spanish	5	
	Swahili	1	
	Vietnamese	2	24
December 2016	Bosnian	2	
	French	1	
	Nepali	3	
	Somali	4	
	Vietnamese	1	11
January 2017	Arabic	1	
	Bosnian	1	
	Creole	1	
	Kirundi	5	

Interpreters Statistics

NDODYPROD

Date Range: 01/01/2013 to 08/31/2018 Languages: Sign Language,Acholi,Afrikaans (South Africa),Albanian,Amerhic...

Report Options: Summary

East Central District Cass County Steele County Trail County

Cass County continued...

Month and Year	Language	Number of Assignments	Total
January 2017	Nepali	4	
	Somali	1	
	Spanish	5	
	Swahili	3	
	Vietnamese	2	23
February 2017	Arabic	1	
	Creole	1	
	Kirundi	3	
	Nepali	7	
	Somali	2	
	Spanish	1	
	Swahili	1	
	Vietnamese	1	17
March 2017	Bosnian	1	
	Kirundi	10	
	Liberian	1	
	Nepali	4	
	Sign Language	1	
	Somali	2	
	Spanish	1	
	Swahili	3	23
April 2017	Arabic	1	
	Kirundi	9	
	Nepali	4	
	Somali	1	
	Spanish	2	
	Sudanese	1	
	Swahili	2	
	Vietnamese	1	21
May 2017	Arabic	4	
	Kirundi	3	
	Liberian	1	
	Nepali	3	
	Sign Language	1	
	Somali	6	
	Spanish	2	
	Sudanese	4	
June 2017	Swahili	2	26
	Arabic	1	
	Krahn	1	
	Somali	2	
July 2017	Spanish	1	5
	Kirundi	1	

Printed on 9/17/2018 at 5:23 PM

Page 8 of 11

Interpreters Statistics

NDODYPROD

Date Range: 01/01/2013 to 08/31/2018 Languages: Sign Language,Acholi,Afrikaans (South Africa),Albanian,Amerlic...

Report Options: Summary

East Central District Cass County Steele County Trail County

Cass County continued...

Month and Year	Language	Number of Assignments	Total
July 2017	Nepali	3	
	Spanish	2	
	Swahili	1	7
August 2017	Bosnian	2	
	Chinese	1	
	Kirundi	6	
September 2017	Nepali	1	10
	Creole	1	
	Nepali	1	
	Sign Language	1	
	Somali	1	
	Spanish	2	
October 2017	Swahili	1	7
	Bosnian	3	
	Creole	3	
	Liberian	3	
	Nepali	1	
	Sign Language	2	
	Somali	4	
	Spanish	2	18
November 2017	Arabic	2	
	Bosnian	1	
	Kinyarwanda	2	
	Kirundi	1	
	Nepali	2	
	Russian	2	
	Sign Language	2	
	Somali	2	
	Spanish	2	16
	Arabic	1	
December 2017	Kinyarwanda	1	
	Kirundi	1	
	Liberian	3	
	Nepali	3	
	Sign Language	11	
	Somali	4	
	Spanish	1	
	Vietnamese	1	26
January 2018	Amerlic	1	
	Arabic	2	
	Kinyarwanda	1	
	Kirundi	2	
	Liberian	2	

Interpreters Statistics

NDODYPROD

Date Range: 01/01/2013 to 08/31/2018 Languages: Sign Language,Acholi,Afrikaans (South Africa),Albanian,Amerlic...

Report Options: Summary

East Central District Cass County Steele County Trall County

Cass County continued...

Month and Year	Language	Number of Assignments	Total
January 2018	Nepali	4	
	Sign Language	1	
	Somali	6	
	Spanish	1	
	Swahili	1	21
February 2018	Arabic	1	
	Bosnian	2	
	Kirundi	1	
	Liberian	1	
	Nepali	3	
	Sign Language	1	
	Somali	1	
	Swahili	1	11
	Arabic	6	
March 2018	Kirundi	1	
	Mandarin	2	
	Nepali	7	
	Sign Language	3	
	Somali	3	
	Spanish	1	
	Swahili	1	24
	Arabic	5	
	Kirundi	3	
April 2018	Madl	2	
	Mandarin	1	
	Nepali	5	
	Sign Language	1	
	Somali	4	
	Spanish	2	
	Swahili	3	26
	Arabic	5	
	Liberian	1	
May 2018	Nepali	9	
	Somali	2	
	Spanish	9	
	Swahili	1	
	Vietnamese	1	28
	Arabic	4	
	Bosnian	1	
June 2018	Liberian	2	
	Mandarin	1	
	Nepali	1	
	Sign Language	1	
	Arabic	1	

Interpreters Statistics

NDODYPROD

Date Range: 01/01/2013 to 08/31/2018 Languages: Sign Language,Acholi,Afrikaans (South Africa),Albanian,Amerhc...

Report Options: Summary

East Central District Cass County Steele County Trail County

Cass County continued...

Month and Year	Language	Number of Assignments	Total
June 2018	Spanish	1	13
	Vietnamese	2	
July 2018	Amerhc	1	
	Arabic	3	
	Kirundi	1	
	Nepali	6	
	Sign Language	2	
	Somali	1	
	Spanish	3	
	Swahili	3	
	August 2018	5	
	Arabic	5	
August 2018	Bosnian	1	20
	Kirundi	5	
	Mandarin	1	
	Nepali	7	
	Sign Language	2	
	Somali	2	
	Spanish	3	
Grand Total:			1100

ATTACHMENT 6A - Case Filing Statistics Report for 2018 (using Projected Year Total)

Case Filing Statistics Report

NDODYPROD

East Central District, Cass County, Steele County, ...

Case Filing Date Range: 01/01/2018 to 08/31/2018

Case Category Case Type and Case Subtype	Cases Filed in Date Range	Total Cases Filed Year To Date 2018	Total Cases Filed Year To Date 2017	Case Filing Increase/Decrease		% Case Filing Increase/Decrease	Projected Year Total
Civil							
Administrative Appeal	42	42	31	11	+	35.48	63
Administrative Filing	3	3	3	0		0.00	4
Condemnation / Eminent Domain	1	1	7	6	-	85.71	2
Contract / Collection	1,485	1,485	1,354	131	+	9.68	2228
Criminal Money Judgment	391	391	321	70	+	21.81	586
Forcible Detainer	466	466	361	105	+	29.09	699
Foreclosure	51	51	61	10	-	16.39	76
Foreign Judgment	46	46	39	7	+	17.95	69
Hospital Liens	72	72	181	109	-	60.22	108
Malpractice	5	5	3	2	+	66.67	8
Name Change	101	101	91	10	+	10.99	152
Other Civil	142	142	142	0		0.00	213
Civil Forfeiture	39	39	52	13	-	25.00	59
Firearms Restoration	0	0	1	1	-	100.00	0
No Subtype	103	103	89	14	+	15.73	154
Personal Injury	25	25	34	9	-	26.47	38
Asbestos	1	1	13	12	-	92.31	2
No Subtype	24	24	21	3	+	14.29	36
Post Conviction Relief	12	12	9	3	+	33.33	18
Property Damage	13	13	15	2	-	13.33	20
Quiet Title	8	8	4	4	+	100.00	12
Restraining Order	176	176	174	2	+	1.15	264
SARO	1	1	0	1	+		2
No Subtype	175	175	174	1	+	0.57	262
Small Claims	858	858	698	160	+	22.92	1287
Special Proceeding	1	1	0	1	+		2
Transcribed Judgment	20	20	17	3	+	17.65	30
Trust	10	10	11	1	-	9.09	15
Total Civil	3,928	3,928	3,556	372	+	10.46	5894

Case Filing Statistics Report

NDODYPROD

East Central District, Cass County, Steele County, ...

Case Filing Date Range: 01/01/2018 to 08/31/2018

Case Category Case Type and Case Subtype	Cases Filed in Date Range	Total Cases Filed Year To Date 2018	Total Cases Filed Year To Date 2017	Case Filing Increase/Decrease		% Case Filing Increase/Decrease	Projected Year Total
Criminal							
Administrative Game and Fish Violation	17	17	17	0		0.00	26
Administrative Traffic	320	320	920	600	-	65.22	480
Administrative Traffic E-Citation	8,536	8,536	8,515	21	+	0.25	12804
City Transfer	237	237	179	58	+	32.40	356
Extradition	217	217	244	27	-	11.07	326
Felony	1,085	1,085	1,107	22	-	1.99	1628
Infractions	35	35	51	16	-	31.37	52
Juvenile Delinquency	188	188	250	62	-	24.80	282
Juvenile Extradition	3	3	8	5	-	62.50	4
Juvenile Unruly	25	25	17	8	+	47.06	38
Misdemeanor	2,380	2,380	2,239	141	+	6.30	3570
Municipal Appeal	5	5	3	2	+	66.67	8
Total Criminal	13,048	13,048	13,550	502	-	3.70	19574

Case Filing Statistics Report

NDODYPROD

East Central District, Cass County, Steele County, ...

Case Filing Date Range: 01/01/2018 to 08/31/2018

Case Category Case Type and Case Subtype	Cases Filed in Date Range	Total Cases Filed Year To Date 2018	Total Cases Filed Year To Date 2017	Case Filing Increase/Decrease	% Case Filing Increase/Decrease	Projected Year Total
Family						
Adoption	56	56	59	3 -	5.08 -	84
Annulment	1	1	5	4 -	80.00 -	2
Child Support	107	107	224	117 -	52.23 -	160
IV-D Case	74	74	163	79 -	61.63 -	111
Not IV-D Case	2	2	3	1 -	33.33 -	3
No Subtype	31	31	60	37 -	64.41 -	46
Continued Foster Care Services	4	4	5	1 -	20.00 -	6
Divorce	381	381	386	5 -	1.30 -	572
IV-D Case	1	1	6	7 -	87.60 -	2
Not IV-D Case	1	1	19	18 -	94.74 -	2
No Subtype	379	379	369	20 +	5.67 +	668
Juvenile Deprivation	126	126	114	12 +	10.53 +	189
Juvenile Guardianship	18	18	4	14 +	350.00 +	27
Juvenile Special Proceedings	5	5	16	11 -	68.75 -	8
Juvenile Termination of Parental Rights	53	53	45	8 +	17.78 +	80
Legal Separation	1	1	0	1 +		2
Other Family	4	4	3	1 +	33.33 +	6
Parenting Responsibility	37	37	39	2 -	5.13 -	56
IV-D Case	1	1	4	3 -	75.00 -	2
Not IV-D Case	1	1	4	3 -	75.00 -	2
No Subtype	35	35	31	4 +	12.90 +	62
Paternity	65	65	67	2 -	2.99 -	98
IV-D Case	19	19	16	3 +	15.75 +	28
No Subtype	46	46	61	6 -	9.00 -	69
Post Paternity	46	46	56	10 -	17.86 -	69
IV-D Case	21	21	23	2 -	8.70 -	32
Not IV-D Case	0	0	3	3 -	100.00 -	0
No Subtype	25	25	30	6 -	16.67 -	38
Protection Order	65	65	47	18 +	38.30 +	98
Public Judgment	34	34	28	6 +	21.43 +	51
Relinquishment of Parental Rights	25	25	19	6 +	31.58 +	38

Case Filing Statistics Report

NDODYPROD

East Central District, Cass County, Steele County, ...

Case Filing Date Range: 01/01/2018 to 08/31/2018

Case Category Case Type and Case Subtype	Cases Filed in Date Range	Total Cases Filed Year To Date 2018	Total Cases Filed Year To Date 2017	Case Filing Increase/Decrease	% Case Filing Increase/Decrease	Projected Year Total
UCCJ	4	4	6	2 -	33.33 -	6
UIFSA	66	66	102	36 -	35.29 -	99
IV-D Case	32	32	60	18 -	36.00 -	48
No Subtype	34	34	62	18 -	34.62 -	61
Total Family	1,098	1,098	1,225	127 -	10.37 -	1546
Probate						
Conservatorship	1	1	2	1 -	50.00 -	2
Conservatorship and Guardianship	19	19	26	7 -	26.92 -	28
Conservatorship of a Minor	4	4	6	2 -	33.33 -	6
Domiciliary Proceeding	5	5	8	3 -	37.50 -	8
Guardianship of an Incapacitated Person	34	34	33	1 +	3.03 +	51
Guardianship of a Minor	9	9	14	5 -	35.71 -	14
Guardianship/Conservatorship of a Minor	0	0	1	1 -	100.00 -	0
Mental Health	280	280	269	11 +	4.09 +	420
Chemically Dependent	36	36	17	18 +	106.00 +	62
Mentally Ill	116	116	69	47 +	65.12 +	174
Mentally Ill & Chemically Dependent	116	116	48	67 +	139.60 +	172
No Subtype	14	14	136	121 -	60.63 -	21
Other Probate	5	5	0	5 +		8
Probate Administration (Formal)	3	3	3	0	0.00	4
Probate Administration (Informal)	54	54	58	4 -	6.90 -	81
Probate of Will (Formal)	5	5	8	3 -	37.50 -	8
Probate of Will (Informal)	156	156	146	10 +	6.85 +	234
Sexually Dangerous Individual	0	0	1	1 -	100.00 -	0
Total Probate	575	575	575	0	0.00	864
Grand Total	18,649	18,649	18,906	257 -	1.36 -	27878

ATTACHMENT 6B - Case Filing Statistics Report for 2017 (also showing 2016)

Case Filing Statistics Report

NDODYPROD

East Central District, Cass County, Steele County, ...

Case Filing Date Range: 01/01/2017 to 12/31/2017

Case Category Case Type and Case Subtype	Cases Filed in Date Range	Total Cases Filed Year To Date 2017	Total Cases Filed Year To Date 2016	Case Filing Increase/Decrease		% Case Filing Increase/Decrease	Projected Year Total
Civil							
Administrative Appeal	45	45	41	4	+	9.76	45
Administrative Filing	3	3	3	0		0.00	3
Condemnation / Eminent Domain	7	7	9	2	-	22.22	7
Contract / Collection	1,930	1,930	1,920	10	+	0.52	1930
Criminal Money Judgment	534	534	549	15	-	2.73	534
Forcible Detainer	566	566	520	46	+	8.85	566
Foreclosure	94	94	72	22	+	30.56	94
Foreign Judgment	53	53	81	28	-	34.57	53
Hospital Liens	264	264	0	264	+		264
Malpractice	3	3	8	5	-	62.50	3
Name Change	129	129	142	13	-	9.15	129
Other Civil	198	198	197	1	+	0.51	198
Civil Forfeiture	76	76	70	6	+	8.67	76
Firearms Restoration	1	1	3	2	-	66.67	1
No Subtype	121	121	124	3	-	2.42	121
Personal Injury	43	43	41	2	+	4.88	43
Asbestos	13	13	6	6	+	100.00	13
No Subtype	30	30	36	6	-	16.67	30
Post Conviction Relief	20	20	14	6	+	42.86	20
Property Damage	21	21	31	10	-	32.26	21
Quiet Title	6	6	4	2	+	50.00	6
Restraining Order	260	260	171	89	+	52.05	260
SARO	2	2	0	2	+		2
No Subtype	260	260	171	87	+	60.00	260
Small Claims	1,064	1,064	1,023	41	+	4.01	1064
Special Proceeding	0	0	1	1	-	100.00	0
Transcribed Judgment	25	25	24	1	+	4.17	25
Trust	19	19	19	0		0.00	19
Total Civil	5,284	5,284	4,870	414	+	8.50	5284

Case Filing Statistics Report

NDODYPROD

East Central District, Cass County, Steele County, ...

Case Filing Date Range: 01/01/2017 to 12/31/2017

Case Category Case Type and Case Subtype	Cases Filed in Date Range	Total Cases Filed Year To Date 2017	Total Cases Filed Year To Date 2016	Case Filing Increase/Decrease		% Case Filing Increase/Decrease	Projected Year Total
Criminal							
Administrative Game and Fish Violation	48	48	46	2	+	4.35	48
Administrative Traffic	1,174	1,174	906	268	+	29.58	1174
Administrative Traffic E-Citation	12,300	12,300	12,950	650	-	5.02	12300
City Transfer	277	277	71	206	+	290.14	277
Extradition	363	363	272	91	+	33.46	363
Felony	1,604	1,604	1,595	9	+	0.56	1604
Infractions	69	69	73	4	-	5.48	69
Juvenile Delinquency	380	380	335	45	+	13.43	380
Juvenile Extradition	11	11	9	2	+	22.22	11
Juvenile Unruly	27	27	37	10	-	27.03	27
Misdemeanor	3,399	3,399	2,584	815	+	31.54	3399
Municipal Appeal	6	6	3	3	+	100.00	6
Total Criminal	19,658	19,658	18,881	777	+	4.12	19658

Case Filing Statistics Report

NDODYPROD

East Central District, Cass County, Steele County, ...

Case Filing Date Range: 01/01/2017 to 12/31/2017

Case Category Case Type and Case Subtype	Cases Filed in Date Range	Total Cases Filed Year To Date 2017	Total Cases Filed Year To Date 2016	Case Filing Increase/Decrease	% Case Filing Increase/Decrease	Projected Year Total
Family						
Adoption	83	83	75	8 +	10.67 +	83
Annulment	6	6	1	5 +	500.00 +	6
Child Support	288	288	277	11 +	3.97 +	288
IV-D Case	195	195	184	11 +	5.98 +	195
Not IV-D Case	4	4	3	1 +	33.33 +	4
No Subtype	89	89	90	1 -	1.11 -	89
Continued Foster Care Services	8	8	6	2 +	33.33 +	8
Divorce	574	574	586	12 -	2.05 -	574
IV-D Case	12	12	14	2 -	14.29 -	12
Not IV-D Case	23	23	66	43 -	65.15 -	23
No Subtype	639	639	606	33 +	5.62 +	639
Juvenile Deprivation	166	166	159	7 +	4.40 +	166
Juvenile Guardianship	10	10	22	12 -	54.55 -	10
Juvenile Special Proceedings	19	19	18	1 +	5.56 +	19
Juvenile Termination of Parental Rights	66	66	82	16 -	19.51 -	66
Legal Separation	2	2	2	0	0.00	2
Other Family	5	5	1	4 +	400.00 +	5
Parenting Responsibility	57	57	70	13 -	18.57 -	57
IV-D Case	6	6	7	1 -	14.29 -	6
Not IV-D Case	6	6	6	1 -	15.67 -	6
No Subtype	45	45	57	11 -	19.30 -	45
Paternity	91	91	98	7 -	7.14 -	91
IV-D Case	23	23	34	11 -	32.35 -	23
Not IV-D Case	0	0	2	2 -	100.00 -	0
No Subtype	68	68	62	6 +	9.68 +	68
Post Paternity	76	76	107	31 -	28.97 -	76
IV-D Case	36	36	44	8 -	15.15 -	36
Not IV-D Case	3	3	2	1 +	50.00 +	3
No Subtype	37	37	61	24 -	39.34 -	37
Protection Order	80	80	74	6 +	8.11 +	80
Public Judgment	38	38	23	15 +	65.22 +	38

Printed on 09/17/2018 at 5:12:10 PM

Page 3 of 5

Case Filing Statistics Report

NDODYPROD

East Central District, Cass County, Steele County, ...

Case Filing Date Range: 01/01/2017 to 12/31/2017

Case Category Case Type and Case Subtype	Cases Filed in Date Range	Total Cases Filed Year To Date 2017	Total Cases Filed Year To Date 2016	Case Filing Increase/Decrease		% Case Filing Increase/Decrease	Projected Year Total
Family(continued)							
Foreign Protection Order	0	0	3	3	-	100.00 -	0
Foreign Restraining Order	0	0	1	1	-	100.00 -	0
No Subtype	38	38	19	19	+	100.00 +	38
Relinquishment of Parental Rights	26	26	35	9	-	25.71 -	26
UCCJ	8	8	19	11	-	57.89 -	8
UIFSA	158	158	134	24	+	17.91 +	158
IV-D Case	79	79	74	5	+	6.76 +	79
Not IV-D Case	0	0	2	2	-	100.00 -	0
No Subtype	79	79	68	21	+	36.21 +	79
Total	1,761	1,761	1,789	28	-	1.57 -	1761

Case Filing Statistics Report

NDODYPROD

East Central District, Cass County, Steele County, ...

Case Filing Date Range: 01/01/2017 to 12/31/2017

Case Category Case Type and Case Subtype	Cases Filed in Date Range	Total Cases Filed Year To Date 2017	Total Cases Filed Year To Date 2016	Case Filing Increase/Decrease		% Case Filing Increase/Decrease	Projected Year Total
Probate							
Conservatorship	5	5	1	4	+	400.00	5
Conservatorship and Guardianship	35	35	26	9	+	34.62	35
Conservatorship of a Minor	6	6	9	3	-	33.33	6
Domiciliary Proceeding	13	13	11	2	+	18.18	13
Guardianship of an Incapacitated Person	45	45	48	3	-	6.25	45
Guardianship of a Minor	22	22	44	22	-	50.00	22
Guardianship/Conservatorship of a Minor	2	2	2	0		0.00	2
Mental Health	419	419	418	1	+	0.24	419
Chemically Dependent	41	41	0	41	+		41
Mentally Ill	124	124	3	121	+	4033.33	124
Mentally Ill & Chemically Dependent	93	93	6	88	+	1760.00	93
No Subtype	161	161	410	249	-	60.73	161
Other Probate	1	1	2	1	-	50.00	1
Probate Administration (Formal)	6	6	6	0		0.00	6
Probate Administration (Informal)	88	88	75	13	+	17.33	88
Probate of Will (Formal)	15	15	7	8	+	114.29	15
Probate of Will (Informal)	221	221	233	12	-	5.15	221
Sexually Dangerous Individual	1	1	0	1	+		1
Total Probate	879	879	882	3	-	0.34	879
Grand Total	27,582	27,582	26,422	1,160	+	4.39	27582

ATTACHMENT 6C – Case Filing Statistics Report for 2015 (also showing 2014)

Case Filing Statistics Report

NDODYPROD

East Central District, Cass County, Steele County, ...

Case Filing Date Range: 01/01/2015 to 12/31/2015

Case Category Case Type and Case Subtype	Cases Filed in Date Range	Total Cases Filed Year To Date 2015	Total Cases Filed Year To Date 2014	Case Filing Increase/Decrease		% Case Filing Increase/Decrease	Projected Year Total
Civil							
Administrative Appeal	37	37	37	0		0.00	37
Administrative Filing	3	3	3	0		0.00	3
Condemnation / Eminent Domain	2	2	5	3	-	60.00 -	2
Contract / Collection	1,894	1,894	2,261	367	-	16.23 -	1894
Criminal Money Judgment	460	460	456	4	+	0.88 +	460
Forcible Detainer	435	435	417	18	+	4.32 +	435
Foreclosure	106	106	83	23	+	27.71 +	106
Foreign Judgment	105	105	60	45	+	75.00 +	105
Malpractice	9	9	6	3	+	50.00 +	9
Name Change	116	116	108	8	+	7.41 +	116
Other Civil	146	146	186	40	-	21.51 -	146
Civil Forfeiture	67	67	1	66	+	6600.00 +	67
Firearms Restoration	2	2	0	2	+		2
No Subtype	67	67	186	66	-	62.97 -	67
Personal Injury	49	49	41	8	+	19.51 +	49
Asbestos	14	14	14	0		0.00	14
No Subtype	35	35	27	8	+	29.63 +	35
Post Conviction Relief	22	22	10	12	+	120.00 +	22
Property Damage	30	30	24	6	+	25.00 +	30
Quiet Title	7	7	4	3	+	75.00 +	7
Restraining Order	123	123	76	47	+	61.84 +	123
Small Claims	1,028	1,028	1,091	63	-	5.77 -	1028
Special Proceeding	2	2	2	0		0.00	2
Transcribed Judgment	22	22	30	8	-	26.67 -	22
Trust	16	16	27	11	-	40.74 -	16
Total Civil	4,612	4,612	4,927	315	-	6.39 -	4612

Case Filing Statistics Report

NDODYPROD

East Central District, Cass County, Steele County, ...

Case Filing Date Range: 01/01/2015 to 12/31/2015

Case Category Case Type and Case Subtype	Cases Filed in Date Range	Total Cases Filed Year To Date 2015	Total Cases Filed Year To Date 2014	Case Filing Increase/Decrease		% Case Filing Increase/Decrease	Projected Year Total
Criminal							
Administrative Game and Fish Violation	67	67	80	13	-	16.25 -	67
Administrative Traffic	1,234	1,234	1,539	305	-	19.82 -	1234
Administrative Traffic E-Citation	13,522	13,522	12,716	806	+	6.34 +	13522
City Transfer	1	1	0	1	+		1
No Subtype	13621	13,621	12,716	806	+	6.33 +	13621
City Transfer	80	80	126	46	-	36.51 -	80
Extradition	248	248	217	31	+	14.29 +	248
Felony	1,392	1,392	1,340	52	+	3.88 +	1392
Infractions	71	71	473	402	-	84.99 -	71
Juvenile Delinquency	386	386	355	31	+	8.73 +	386
Juvenile Extradition	4	4	2	2	+	100.00 +	4
Juvenile Unruly	46	46	41	5	+	12.20 +	46
Misdemeanor	2,588	2,588	2,601	13	-	0.50 -	2588
Municipal Appeal	2	2	0	2	+		2
Total Criminal	19,640	19,640	19,490	150	+	0.77 +	19640

Case Filing Statistics Report

NDODYPROD

East Central District, Cass County, Steele County, ...

Case Filing Date Range: 01/01/2015 to 12/31/2015

Case Category Case Type and Case Subtype	Cases Filed in Date Range	Total Cases Filed Year To Date 2015	Total Cases Filed Year To Date 2014	Case Filing Increase/Decrease		% Case Filing Increase/Decrease	Projected Year Total
Family							
Adoption	85	85	80	5	+	6.25	85
Annulment	3	3	2	1	+	50.00	3
Child Support	335	335	399	64	-	16.04	335
IV-D Case	244	244	275	31	-	11.27	244
Not IV-D Case	8	8	7	1	+	14.29	8
No Subtype	83	83	117	34	-	29.06	83
Continued Foster Care Services	7	7	10	3	-	30.00	7
Divorce	547	547	522	25	+	4.79	547
IV-D Case	21	21	19	2	+	10.53	21
Not IV-D Case	70	70	85	14	+	25.00	70
No Subtype	456	456	447	9	+	2.01	456
Juvenile Deprivation	183	183	144	39	+	27.08	183
Juvenile Guardianship	9	9	7	2	+	28.57	9
Juvenile Special Proceedings	11	11	17	6	-	35.29	11
Juvenile Termination of Parental Rights	52	52	36	16	+	44.44	52
Legal Separation	0	0	1	1	-	100.00	0
Other Family	9	9	7	2	+	28.57	9
Parenting Responsibility	55	55	61	6	-	9.84	55
IV-D Case	7	7	9	2	-	22.22	7
Not IV-D Case	3	3	10	7	-	70.00	3
No Subtype	45	45	42	3	+	7.14	45
Paternity	106	106	106	0		0.00	106
IV-D Case	30	30	30	0		0.00	30
Not IV-D Case	3	3	1	2	+	200.00	3
No Subtype	73	73	75	2	-	2.67	73
Post Paternity	117	117	143	26	-	18.18	117
IV-D Case	42	42	76	34	-	44.74	42
Not IV-D Case	5	5	3	2	+	66.67	5
No Subtype	70	70	64	6	+	9.38	70
Protection Order	51	51	79	28	-	35.44	51
Public Judgment	19	19	38	19	-	50.00	19

Printed on 09/19/2018 at 9:40:13 AM

Page 3 of 4

Case Filing Statistics Report

NDODYPROD

East Central District, Cass County, Steele County, ...

Case Filing Date Range: 01/01/2015 to 12/31/2015

Case Category Case Type and Case Subtype	Cases Filed in Date Range	Total Cases Filed Year To Date 2015	Total Cases Filed Year To Date 2014	Case Filing Increase/Decrease	% Case Filing Increase/Decrease	Projected Year Total
Relinquishment of Parental Rights	38	38	39	1 -	2.56 -	38
UCCJ	2	2	0	2 +		2
UIFSA	146	146	124	22 +	17.74 +	146
IV-D Case	77	77	71	6 +	8.46 +	77
No Subtype	69	69	63	16 +	30.19 +	69
Total Family	1,775	1,775	1,815	40 -	2.20 -	1589
Probate						
Conservatorship	1	1	3	2 -	66.67 -	1
Conservatorship and Guardianship	20	20	32	12 -	37.50 -	20
Conservatorship of a Minor	7	7	6	1 +	16.67 +	7
Domiciliary Proceeding	12	12	9	3 +	33.33 +	12
Guardianship of an Incapacitated Person	33	33	39	6 -	15.38 -	33
Guardianship of a Minor	41	41	43	2 -	4.65 -	41
Guardianship/Conservatorship of a Minor	3	3	3	0	0.00	3
Mental Health	382	382	392	10 -	2.55 -	382
Mentally Ill	2	2	0	2 +		2
No Subtype	380	380	392	12 -	3.06 -	380
Other Probate	4	4	5	1 -	20.00 -	4
Probate Administration (Formal)	9	9	12	3 -	25.00 -	9
Probate Administration (Informal)	89	89	99	10 -	10.10 -	89
Probate of Will (Formal)	18	18	10	8 +	80.00 +	18
Probate of Will (Informal)	246	246	213	33 +	15.49 +	246
Sexually Dangerous Individual	3	3	2	1 +	50.00 +	3
Total Probate	868	868	868	0	0.00	868
Grand Total	26,895	26,895	27,100	205 -	0.76 -	26709